

PRESENTATION

The patented concept Lofthitech

LOWCOST & DESIGN SOLUTIONS FOR YOUR INDEPENDENCE

HOUSING & TRANSPORTATION

For a main or a complementary surface for you or your business ...

Lofthitech the concept of architecture " Clips & Blob " allows ultra fast assembly and disassembly of modular construction lowcost and design , tool-free , ensuring good insulation. Available worldwide by container . For example , a loft of 125m2 (Lofthitech "villa") has a weight of 3,500 kg empty and fits into a single container, transportable by single trailer or helicopter . It is assembled and disassembled in less than 3H .

For a main or a complementary surface for you or your business , an office, a workshop, a training room, a meeting rooms, a store of 500 m2, a showroom, an additional guest room, a dwelling emergency shelter, a highway shelter, a laboratory in the bush, an extra room for friends, a lowcost holiday village, a house on the roof of a building, a humanitarian space, a military shelter, gym space, a swimming pool covering, a loft cabin in the mountains , a complex multi lofts around a pool, a houseboat ...

The possible applications are numerous for this "design" space to live, well insulated thanks to chosen material for the roof and the window bays , the concept of hollow block-structure, refillable , lestable , customizable , with profiles able to fix elements between them : window bays plates and unfoldable roof plates.

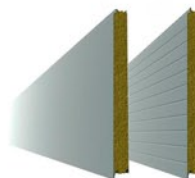
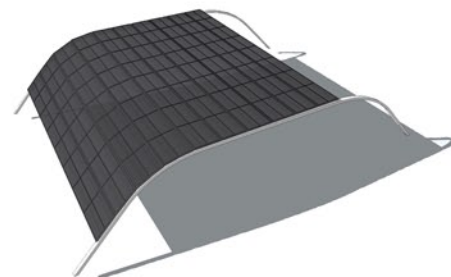
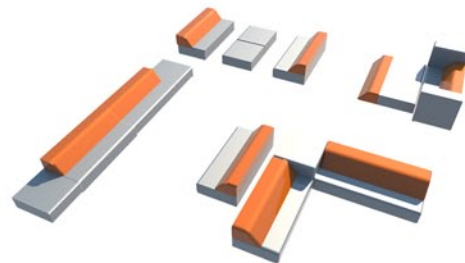
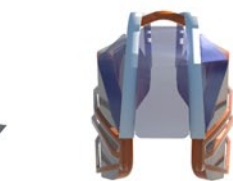
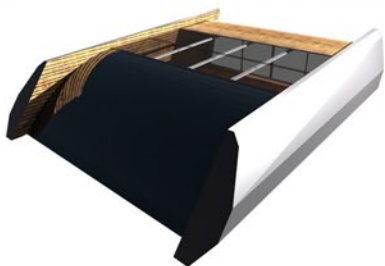
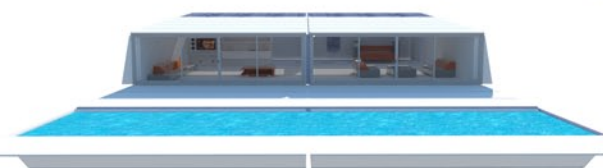
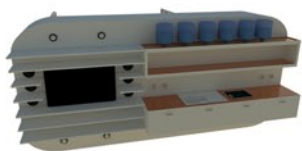
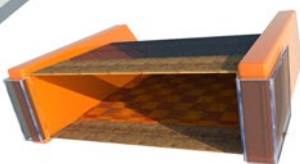
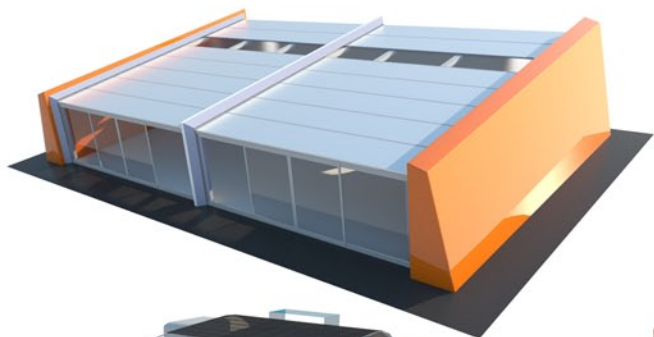
Ultra simple installation in 3 steps (basic Lofthitech)

- 1 / Installation of empty blocks structure ,
- 2 / installation of unfoldable bay plates and roof plates on block profiles
- 3 / tightening weighted auto-locking blocks inward.

- * Concept introduced in the global organization of the WIPO Industrial Property
- * Industrial Designs filed WIPO Hague system
- * Patent & industrial design filed at China HK IP agency for Chinese territory.
- * Web Contents, 2d, 3d, videos, photos & texts of the publication Lofthitech.com protected & monitored by DMCA, Google, Youtube.

Order Now on this site or contact our sales department .

Europe: +33 1 43 80 68 37
Americas : +1 347 709 9965
Asia Pacific: +852 81 70 32 50
Africa: +212 6 79 32 05 04
By mail contact@lofthitech.com



Modular construction in a loft-style with very fast assembly, without tools, USD surface (unlimited surface duplication)



Online vehicle 2 or 4 seats, Scooter with integral cabin and stabilizers, multi-options. Integral protection for scooters or two-wheelers.



Standardized global package materials : living space + vehicle + set of furniture + autonomous energy supply services + multipurpose block.

LOWCOST & DESIGN SOLUTIONS FOR YOUR INDEPENDENCE: HOUSING. TRANSPORTATION. ENERGY.

ARCHITECTS

Put some "Lofthitech" in your projects !

You find the Lofthitech models interesting both in terms of concept, design, materials, ultra easy installation, endless options, as its unbeatable cost, its unbeatable space-cost ratio...

You share the ideas of the designer and want to integrate Lofthitech in an open building concept (see Lofthitech R5) or in the development of village (mountain, beach, corporate offices ...) whatever your project is, contact us.

Lofthitech provided its modular elements. The architect does ... everything else.

Talk to you soon !

Email: contact@lofthitech.com

Skype: lofthitech.com

MANUFACTURERS

Manufacturing partnership under exclusive subcontract with Lofthitech Ltd

Join a company with an innovative concept, becoming the exclusive manufacturer

in your area, wherever you are in the world.

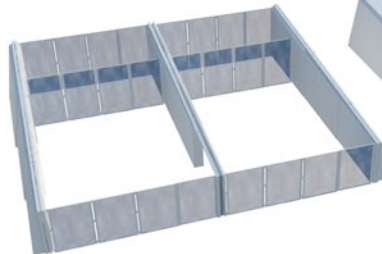
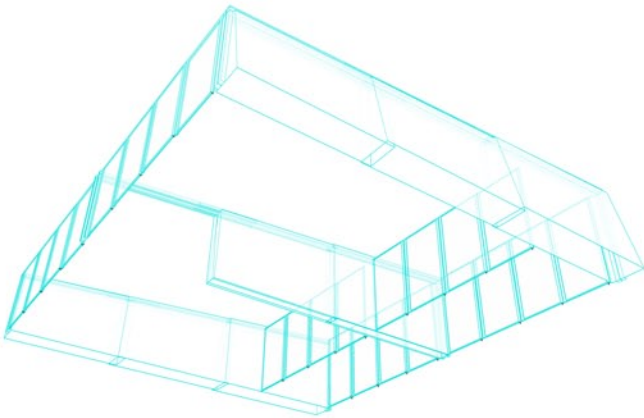
Follow a comprehensive technical training 5 days in Marrakech Morocco

(place of research and expertise Lofthitech) and legalize the Lofthitech Subcontractor Deal.

The manufacturer builds, Lofthitech.com Ltd designs and commercialize .

Appointment request by email: contact@lofthitech.com

Please motivate your application indicating the maximum amount of information about your company, its productive capacity, its logistics capacity, its experience ...

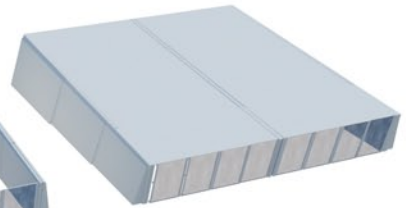
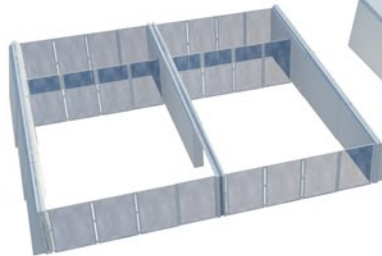
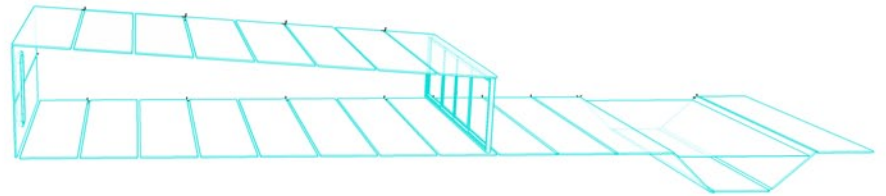
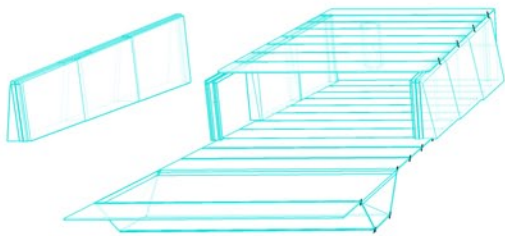
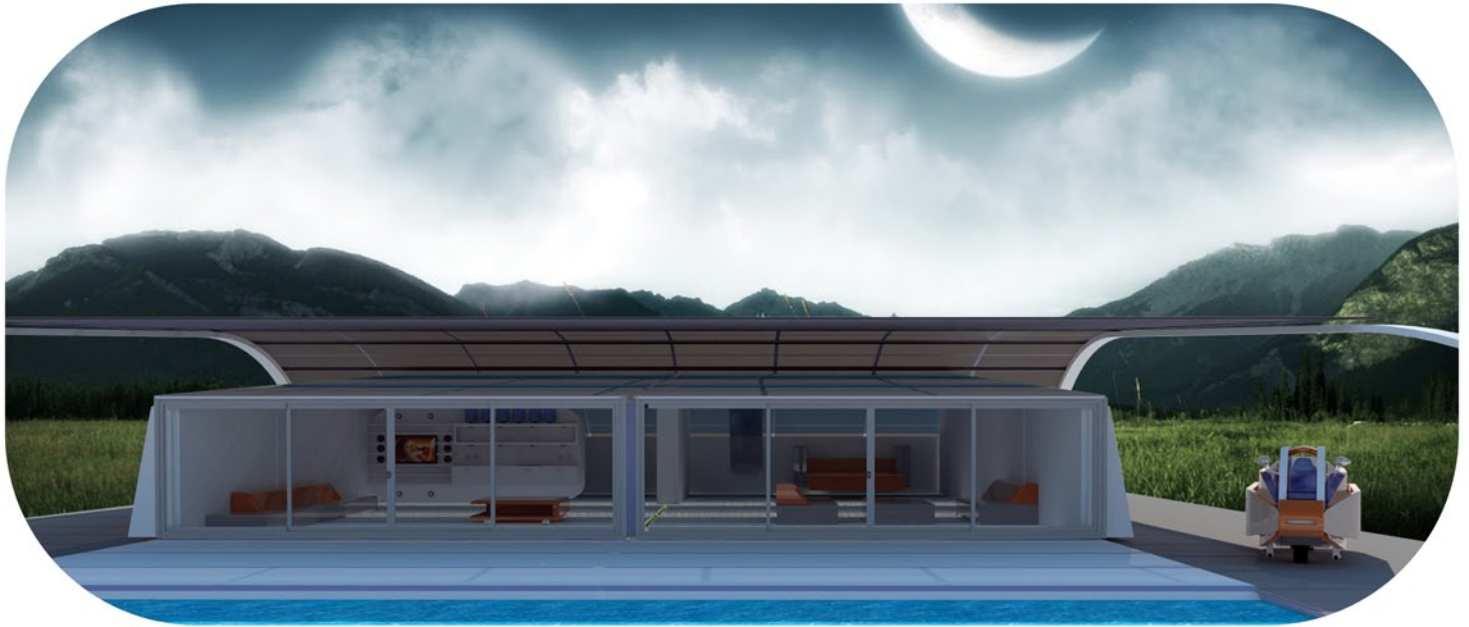


LOFTHITECH 9-150 TARPAULIN 150M2

Folded to be shipped : 9m² / unfolded : 150m²
 Dimensions : width 12.5M. ; height 2.40M. ; length 12M.

Speed of installation record: 10mn!!!
 Ideal for frequent moving.
 Prefab House, loft-type, ultra-quick assembly/disassembly, without using tool.
 When folded up, ready to be shipped (9m²).
 In the unfolded state, used as a living area (150m²).

This quick modular loft constructions installation consists of:
 Structure blocks "Russian doll": a block contains another block that contains another block, which instantly multiplies the living area when deployed.
 Unfoldable window bays in accordion, with integrated door.
 Silicone tarpaulin roof, wired and unfoldable (« sandwich-panel » ribbed optional).
 Mobile shade house with adjustable position rail (optional).
 16 retractable wheels smartly distributed to facilitate the folding, unfolding, loading and unloading of this amazing lofthitech model...



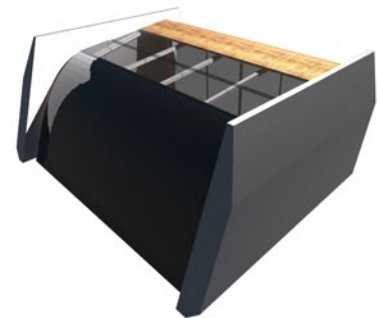
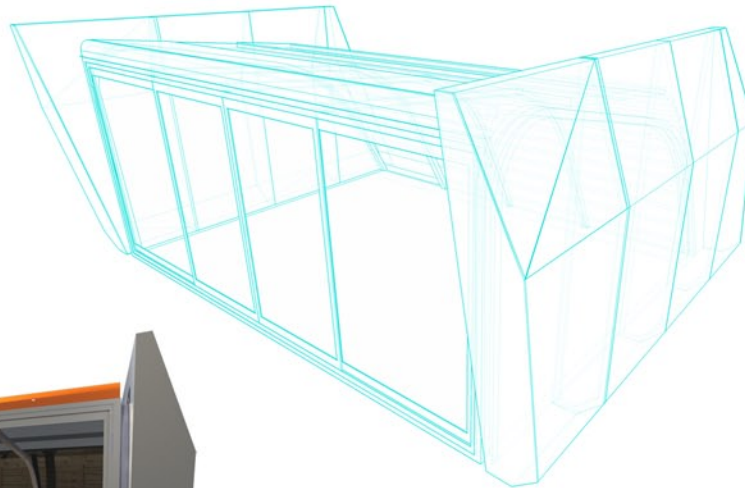
LOFTHITECH 9-150 150 SQ. M.

When folded up, ready to be shipped: 9 SQ.M. / In the unfolded state:150 SQ.M. ...

Dimensions: width: 12.5M; height 12.5M; 2.40 M; length 12M.

Toolless and fast assembly-disassembly modular construction
 Folded state for shipping (folded surface: about 9 square meters)
 Unfolded state for use as a living area (150 square meters unfolded mode).

This modular construction quick installation consists of:
 "Russian doll" structure blocks : a block contains another block that contains another block,
 which instantly multiplies the living area when deployed..
 aluminum sliding window bay
 Roof-bays-floor plates in one sigle unfoldable piece (interconnected polycarbonate plates).
 Optional "Sandwich-panel" ribbed placed above.
 Option: removable and adjustable shade house to protect from sun & heat.
 Great gaskets silicone square profile of approximately 6 cm x 6 cm positioned
 at the top and sides of the structure block for gasketing between the blocks and the bay-roof plates.
 option : unfoldable swimming pool to be placed in the ground.
 Fastening system of the whole structure by Nut-butterflies, ratchet straps, cables,
 flat iron hooks & unfolded plates encircling blocks.
 16 retractable wheels smartly distributed to facilitate the unfolding – folding, loading and unloading.



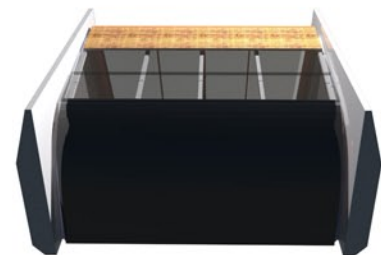
LOFTHITECH GATE I

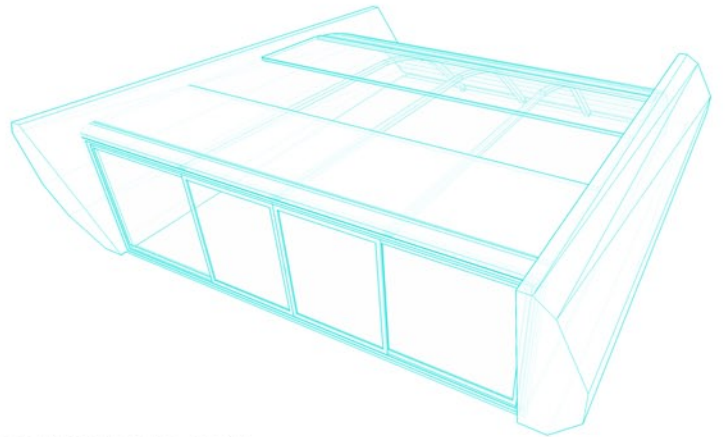
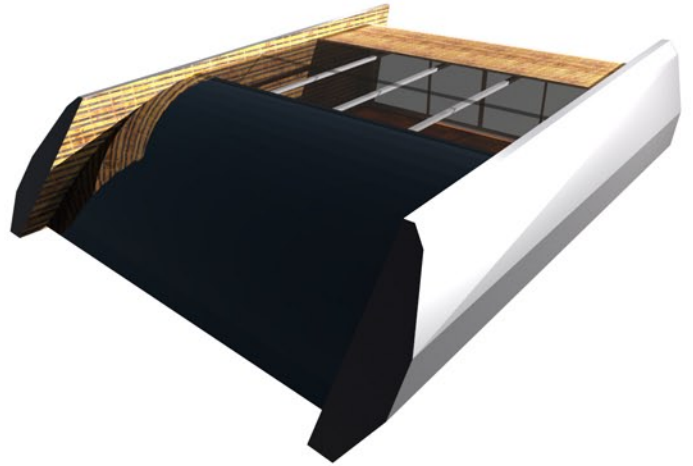
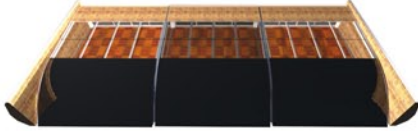
Simplicity and well-being. Installs in less than 3 hours.

Fixing by cables and ratchet straps. Other fixings by locking bars between the metal supports and polycarbonate plates, side water drains, flex seal, door incorporated into the block structure for installing options (recessed kitchen, hifi, bathroom, space storage, window, computer, audiovisual, air conditioning, decor). Rounded roof at the back allowing easy unfolding of the unfoldable roof-bay plates; insulation by sandwich panel elements (option), skylight (option). Everything has been designed to simplify your life with an ultra optimized cost without depriving yourself of comfort and design, and while guaranteeing the unlimited scalability of your living space: doubling the unfoldable roof-bay plates (for cold climates); anti rain-noise shade house plates very efficient for hot climates fixable above the loft (option). Transformation of your removable habitat into solid construction, by filling empty blocks with lightweight concrete; adding partition walls inside; incorporate items into the side blocks to maximize the interior space.

You are at 3 clicks to make a very good deal:
Lofthitech has the best ratio Cost-Space-Quality in the world !

Materials : Double aluminum composite panels, 16mm interconnected polycarbonate plates, painted wrought iron blocks, irocco, Himacs (optional), aluminum profiles, sliding glass door 6M window glass 6 mm, lateral metal supports with water gutter, tarpaulin silicone, flexible PVC, flex seal, central support bars, cables & straps to fix the unfoldable plates, shade house (option).





LOFTHITECH GATE II

Simplicity and well-being. Installs in less than 3 hours.

Fixing by cables and ratchet straps. Other fixings by locking bars between the metal supports and polycarbonate plates, side water drains, flex seal, door incorporated into the block structure for installing options (recessed kitchen, hifi, bathroom, space storage, window, computer, audiovisual, air conditioning, decor). Rounded roof at the back allowing easy unfolding of the unfoldable roof-bay plates; insulation by sandwich panel elements (option), skylight (option). Everything has been designed to simplify your life with an ultra optimized cost without depriving yourself of comfort and design, and while guaranteeing the unlimited scalability of your living space: doubling the unfoldable roof-bay plates (for cold climates); anti rain-noise shade house plates very efficient for hot climates fixable above the loft (option). Transformation of your removable habitat into solid construction, by filling empty blocks with lightweight concrete; adding partition walls inside; incorporate items into the side blocks to maximize the interior space.

You are at 3 clicks to make a very good deal:
Lofthitech has the best ratio Cost-Space-Quality in the world !

Materials : Double aluminum composite panels, 16mm interconnected polycarbonate plates, painted wrought iron blocks, irocco, Himacs (optional), aluminum profiles, sliding glass door 6M window glass 6 mm, lateral metal supports with water gutter, tarpaulin silicone, flexible PVC, flex seal, central support bars, cables & straps to fix the unfoldable plates, shade house (option).





LOFTHITECH SLIM

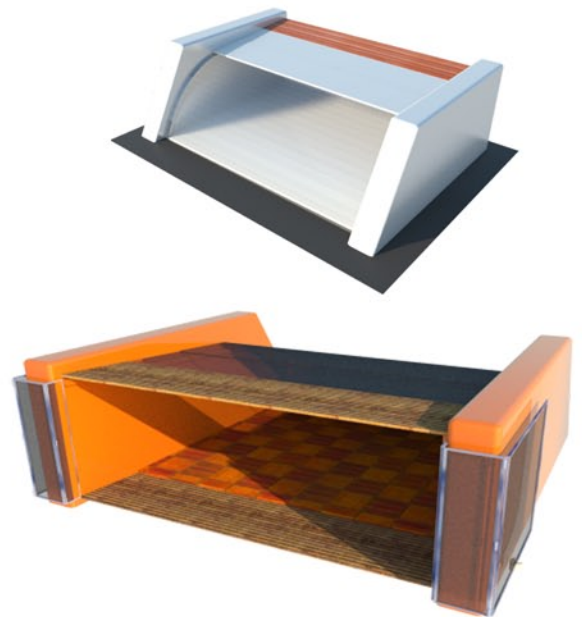
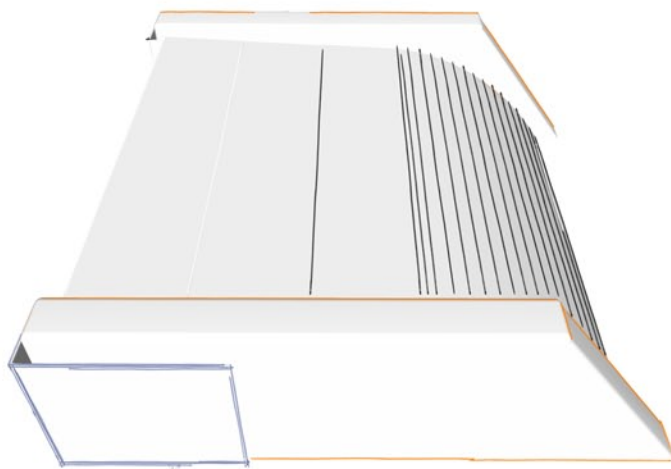
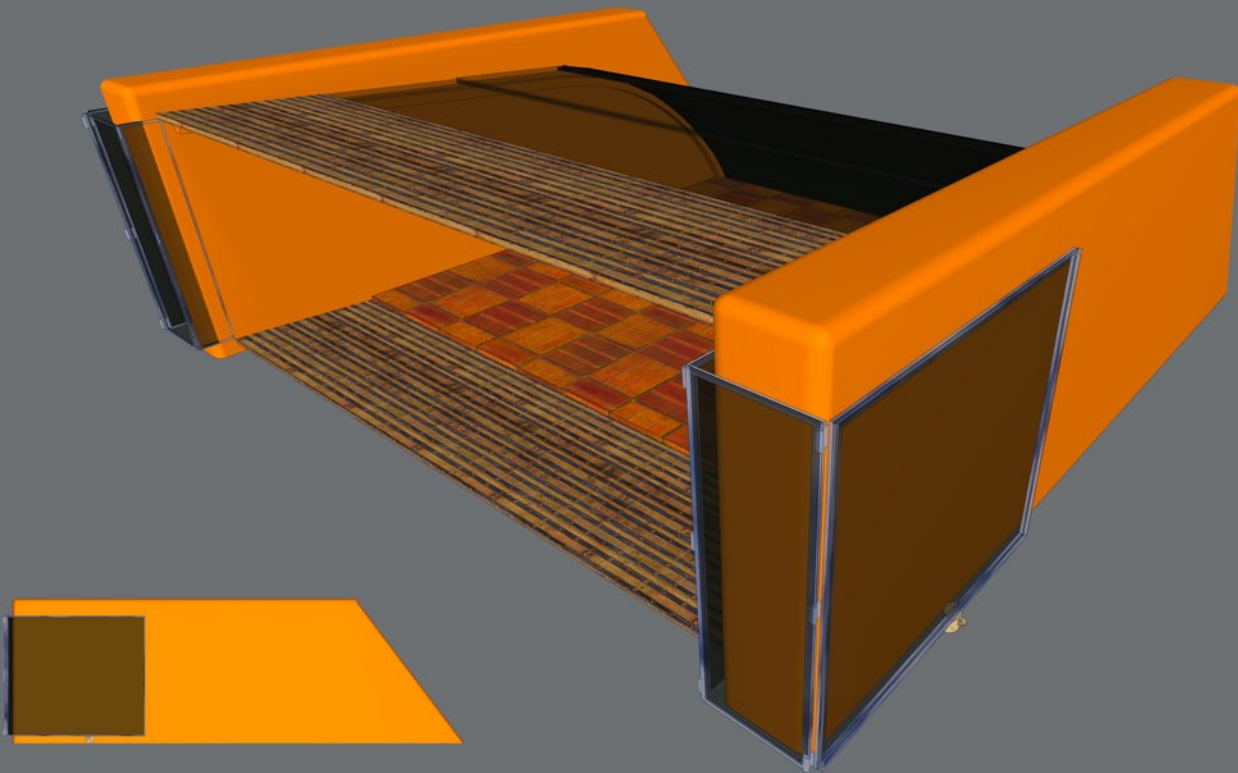
Simplicity and well-being. Installs in less than 3 hours.

Fixing by cables and ratchet straps. Other fixings by locking bars between the metal supports and polycarbonate plates, side water drains, flex seal, door incorporated into the block structure for installing options (recessed kitchen, hifi, bathroom, space storage, window, computer, audiovisual, air conditioning, decor). Rounded roof at the back allowing easy unfolding of the unfoldable roof-bay plates; insulation by sandwich panel elements (option), skylight (option). Everything has been designed to simplify your life with an ultra optimized cost without depriving yourself of comfort and design, and while guaranteeing the unlimited scalability of your living space: doubling the unfoldable roof-bay plates (for cold climates); anti rain-noise shade house plates very efficient for hot climates fixable above the loft (option). Transformation of your removable habitat into solid construction, by filling empty blocks with lightweight concrete; adding partition walls inside; incorporate items into the side blocks to maximize the interior space.

You are at 3 clicks to make a very good deal:

Lofthitech has the best ratio Cost-Space-Quality in the world !

Materials : Double aluminum composite panels, 16mm interconnected polycarbonate plates, painted wrought iron blocks, irocco, Himacs (optional), aluminum profiles, sliding glass door 6M window glass 6 mm, lateral metal supports with water gutter, tarpaulin silicone, flexible PVC, flex seal, central support bars, cables & straps to fix the unfoldable plates, shade house (option).



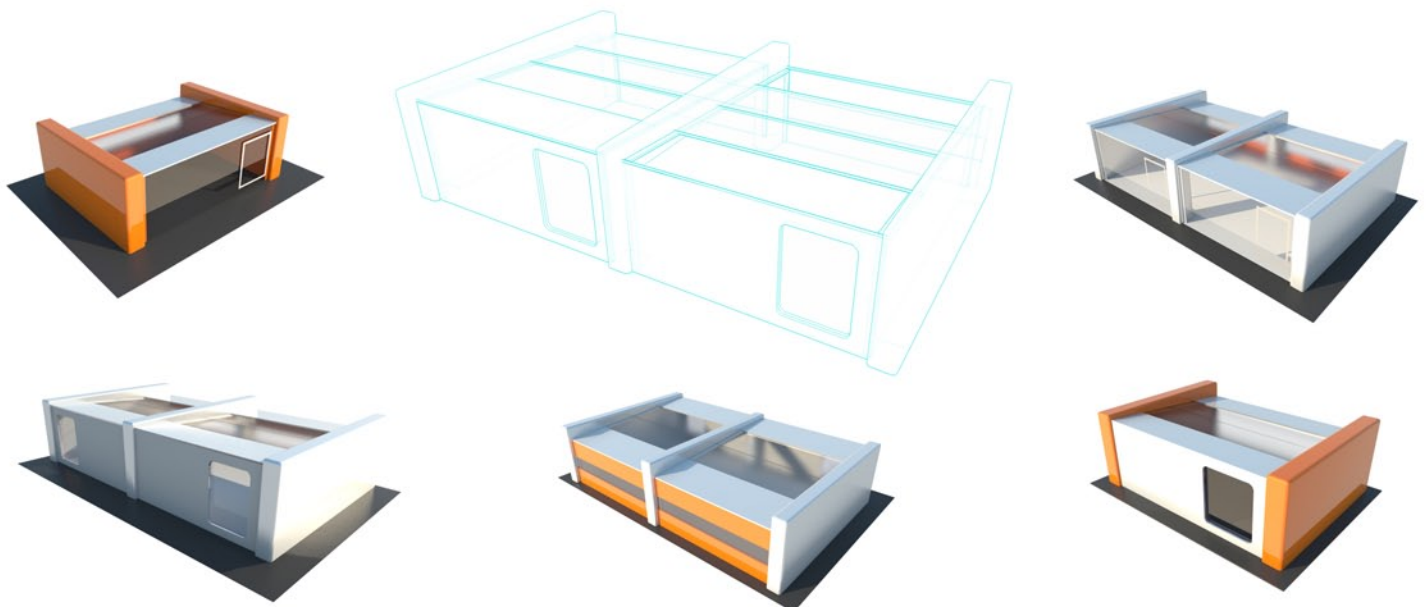
LOFTHITECH BUTTERFLY

Finding inspiration in nature, Lofthitech snail butterfly looks like ...

A snail and a butterfly : The bay window offers two giant door window that open to 270 degrees, so you no longer have any object or metal bar to hide the view: you have in front of you a 12 meters sq nature screen (H2xL6) . Imagine yourself in front of your pool to a lake in the mountains ... Splendid. The snail style comes from the fact the roof ends curved to the ground (back of loft) . This curvature is made possible by cellular polycarbonate sheets, pressed against the structure blocks and support bar with two ratchet straps . Result: an open space EXTREMELY pleasant. This lofthitech is ... alive!

You are at 3 clicks to make a very good deal:
Lofthitech has the best ratio Cost-Space-Quality in the world !

Materials : Double aluminum composite panels, 16mm interconnected polycarbonate plates, painted wrought iron blocks, irocco, Himacs (optional), aluminum profiles, glass door (270°) 6 meters long window glass (6 mm), lateral metal supports with water gutter, tarpaulin silicone, flexible PVC, flex seal, central support bars, cables & straps to fix the unfoldable plates, shade house (option).



LOFTHITECH SQUARE

Initial model of the lofthitech concept (squared structure blocks).

Assembled and disassembled in less than 2 hours without tools, 4 people.

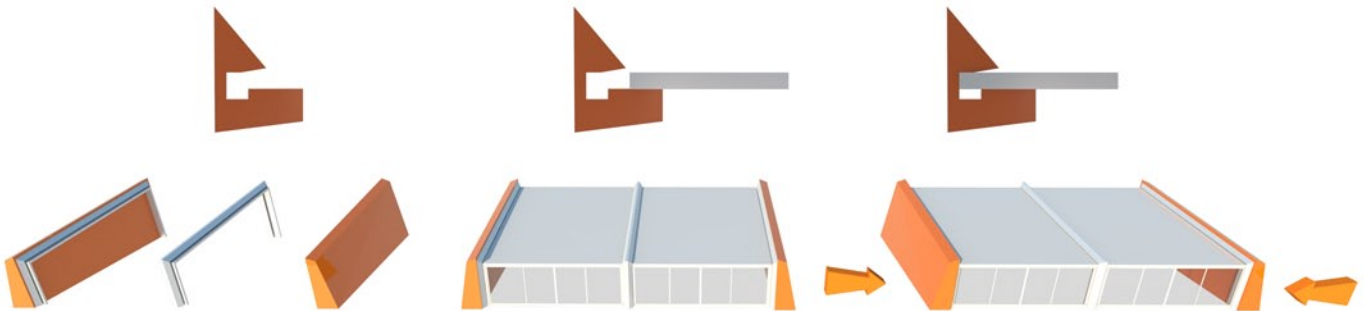
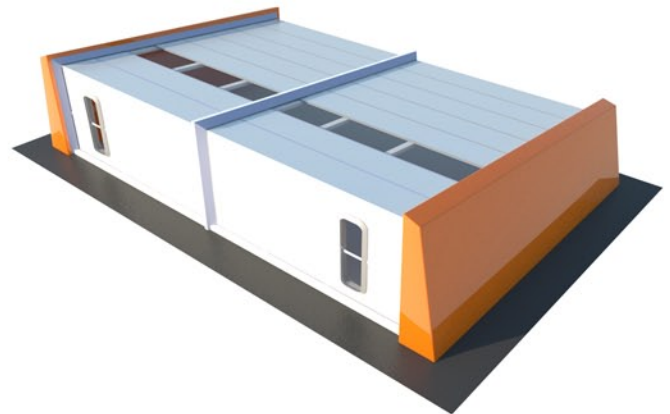
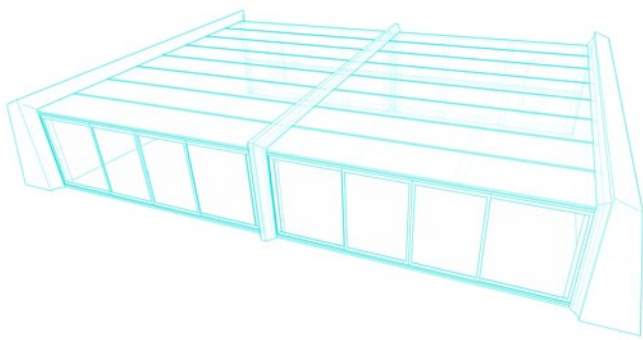
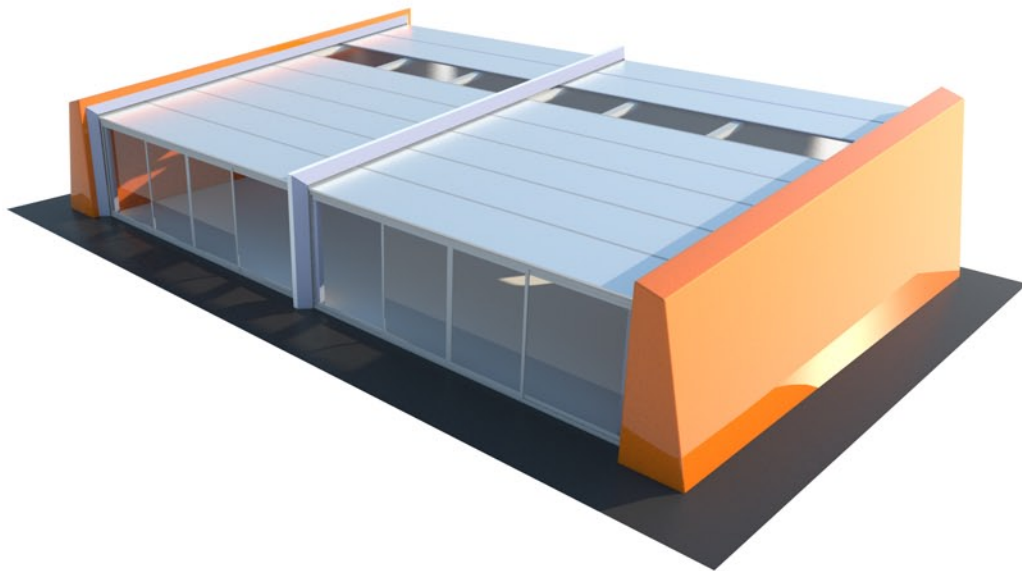
Unfoldable roof-bay plates, structure-block, central support bars, locking bars.

Architecture "clips & blob" (clips to mean that different construction elements fit together and have a fastening system without tools of this embedding, and "blob" to indicate that similar parts to organic body (seals, soft plastics ...) are incorporated to lofthitech elements to enable effective immediate and lasting insulation of the whole structure. Lofthitech square is ready to install on elevated slab of earth or concrete or any sort of stable and tamped ground. Installation plan provided. suitable for any type of climate.

optional : protective wiring for extreme weather conditons.

Walls optional equipment: "Walls" are prefabricated walls equipped with useful elements preconnected for every day life (shower toilet, kitchen, storage closet, dressing room, stereo computer audiovisual, library...) see "walls" on lofthitech.com search phrase. Optional : shade plates or sandwich panel.

Materials : Double aluminum composite panels, 16mm interconnected polycarbonate plates, portholes incorporated to sandwich panels or polycarbonate panels (door window / bay window / well of light), painted wrought iron blocks, irocco, Himacs (optional), aluminum profiles, lateral metal supports with water gutter, tarpaulin silicone, flexible PVC, flex seal, central support bars, cables & straps to fix the unfoldable plates.



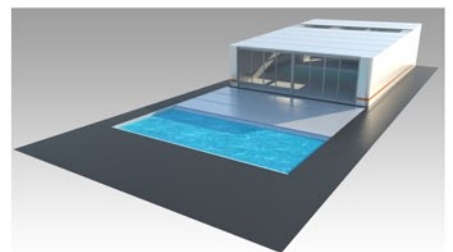
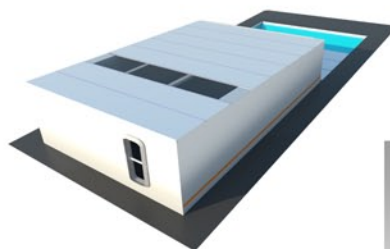
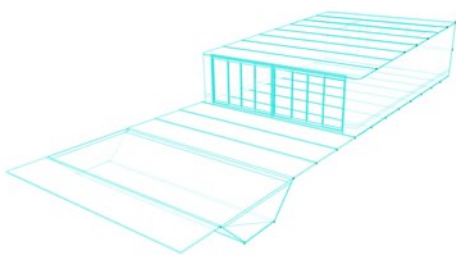
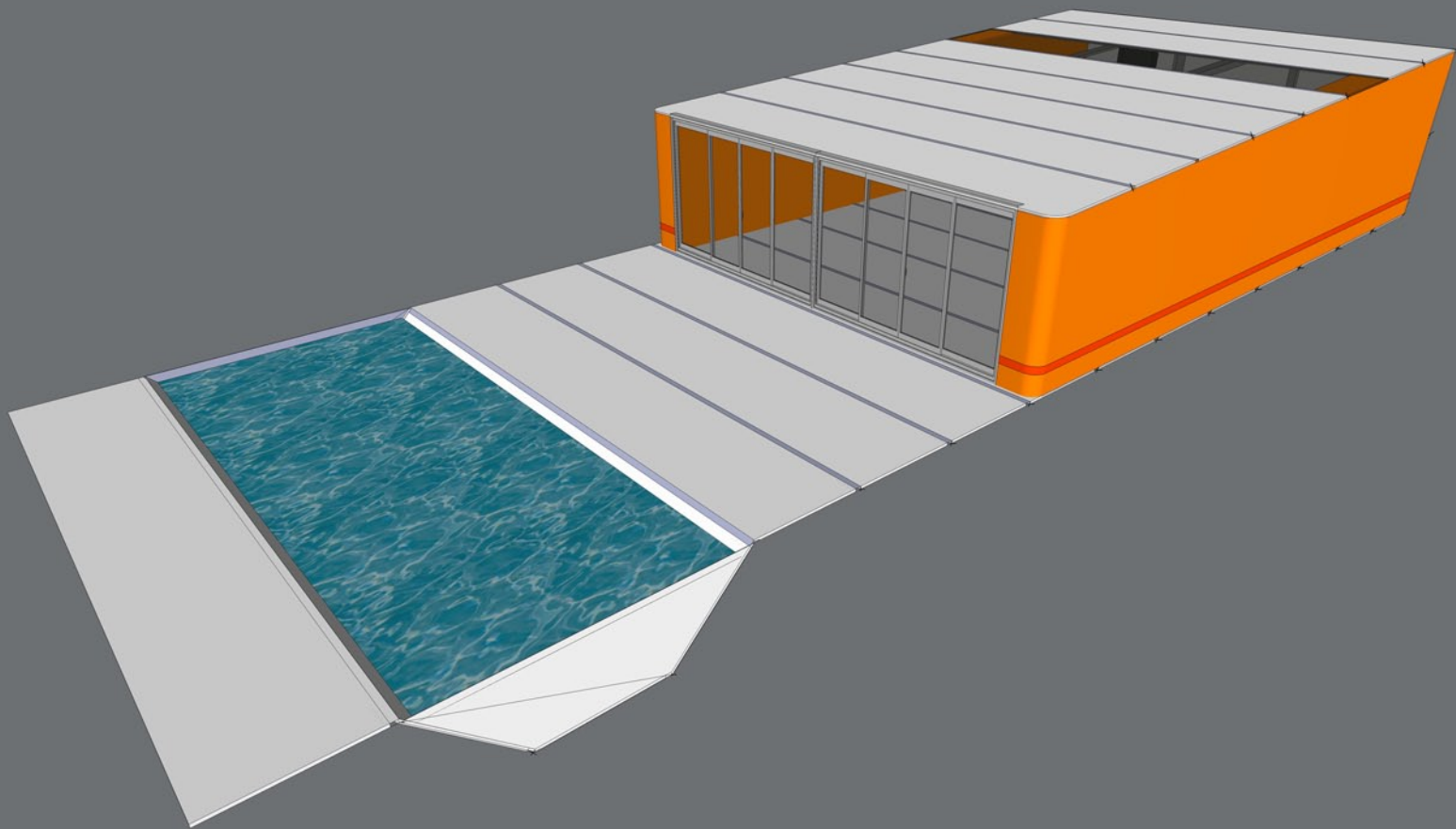
LOFTHITECH VILLA

Aerodynamics, with inclined and sharp structure blocks, the Lofthitech Villa looks like a Countach . Block structure 80 cm thick on the ground with door in the hollow blocks to allow a technician to enter in and customize them. Imagine two villas Lofthitech one in front of the other with a pool swimming lane between the two and a small bridge to go from one to another ... Beautiful , beautiful volumes. This is the star of the standard Lofthitech. No tool fastening system : Ultra simple installation in 3 steps :

- 1 / Installation of empty blocks structure ,
- 2 / installation of unfoldable bay plates and roof plates on block profiles
- 3 / tightening weighted auto-locking blocks inward.

In any event , in any climate. Ready to install in less than 3 hours on prepared soil , tamped , elevated and stable (all soil types) . It's so nice to put away everything you do not want to see in the block structure, leaving only your favorite furniture , your Imac 27 " and your favorite art objects.... Sleeping in the middle of your 125m2 open space? of course... "star" mode by taking advantage of the hole of light provided by translucent massive polycarbonate sheets. All this for a price just amazing !

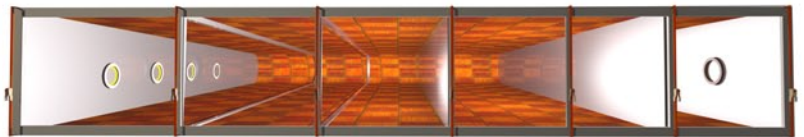
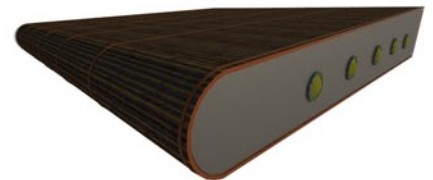
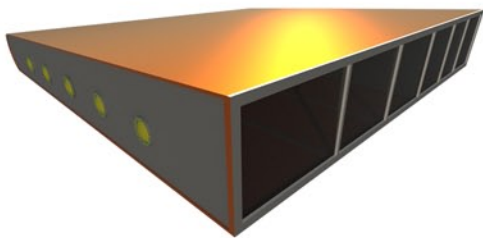
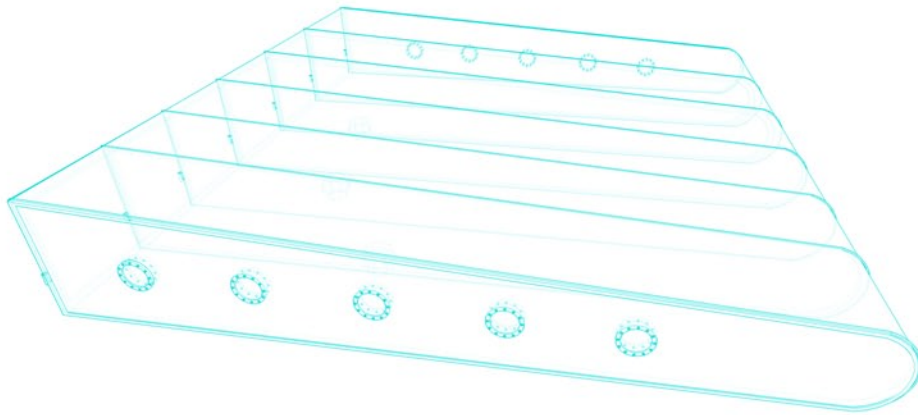
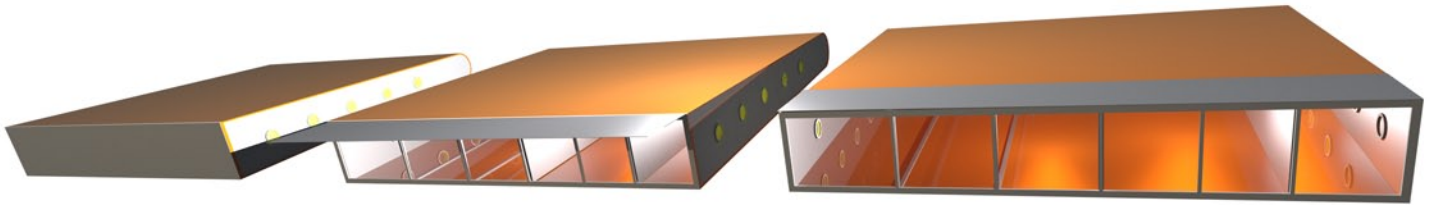
Materials : Double aluminum composite panels, 16mm interconnected polycarbonate or SP plates, portholes incorporated to sandwich panels or polycarbonate panels (door window / bay window / well of light), painted wrought iron blocks, irocco, Himacs (optional), aluminum profiles, lateral metal supports with water gutter, tarpaulin silicone, flexible PVC, flex seal, central support bars, sliding glass door 6 Mètres DSL, shading plates (option).



LOFTHITECH MINI PISCINE

Floor plate , bay plates, terrace plates, pool plates, & roof plates connected one to the other & fully de-foldable . Structure blocks with rigid foam blocks and ultra resistant tarpaulin covering. All the elements are held together by the encircling unfoldable plate. This Lofthitech model provides its soil and also a mini pool & terrace extension.

Materials : foam & tarpaulin blocks, 16mm interconnected polycarbonate plates, painted wrought iron support, aluminum profiles, sliding glass door 6 meters long, tarpaulin silicone, flexible PVC, flex seal, central support bars, shading plates (option).



LOFTHITECH LEZARD

Lofthitech Lezard 36 m2

Lofthitech " Lezard " a giant bed closed , or apartment - bed . 1 meter in height only but all the comfort for sleeping, resting , cooking, washing , watching TV connect to the internet , play (ideal for living space and Playground) ... You can do everything except put you in an upright position (except for children) . To install on any kind of soil, leveled, stable, allowing the water flow .
 Installs in less than 1 hour . Includes 1 living room, 1 bedroom and a bathroom (kitchen equipment and bathroom show " bathroom wall " and " kitchen wall " option. Lofthitech Your " Lezard " customizable at will be launched in manufacturing from your order and will be available in maximum 60 days. So go ahead , submit your order on this site and receive your invoice and certificate of ownership original single identifier immediately.

Lofthitech BBL 144 m2

Lofthitech " BBL " big beautiful loft. Exactly the same proportions as the Lezard loft with 2 meter high and a square of 12 mx 12 m (144 m2). All the comforts of a small villa format loft design lowcost . To install on any kind of soil, leveled, stable, allowing the water flow . Installs in less than 2 hours.
 Includes 1 giant room, 1 bedroom and a giant bathroom (kitchen equipment and bathroom option see " bathroom wall " and " kitchen wall " / inner separation additional equipment or furnishings optional measure) . Your lofthitech " BBL " customizable at will be launched in manufacturing from your order and will be available in maximum 60 days. So go ahead , submit your order on this site and receive your invoice and certificate of ownership original single identifier immediately.

Lofthitech SSBBL 324 m2

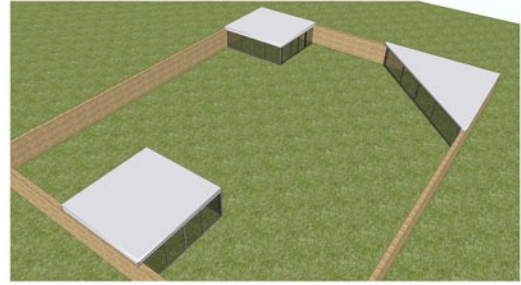
Lofthitech " SSBBL " Super Size Big Beautiful Loft . Exactly the same proportions as the Lezard loft with 3 meter high and a square 18m x 18m (324 m2). All the comforts of a large villa format loft design lowcost . To install on any kind of soil, leveled, stable, allowing the water flow . Installs in less than three hours . Fixing cables and ratchet strap . 1 living large , 1 bedroom and a huge bathroom huge (equipment open kitchen and bathroom option see " bathroom wall " and " kitchen wall " / inner separation additional equipment or furnishings optional custom) . Your lofthitech " SSBBL " customizable at will be launched in manufacturing from your order and will be available in maximum 60 days. So go ahead , submit your order on this site and receive your invoice and certificate of ownership original single identifier immediately.

Materials : Double aluminum composite panels, 16mm polycarbonate plates, frame-blocks wrought iron treated, Teck, Himacs, aluminum profiles, sliding glass door 6 mètres, metal supports with gutter water, tarpaulin silicone, flexible PVC, colmateur, central support bars, cables & straps to fix the unfoldable plates, agricultural shade structures (option)

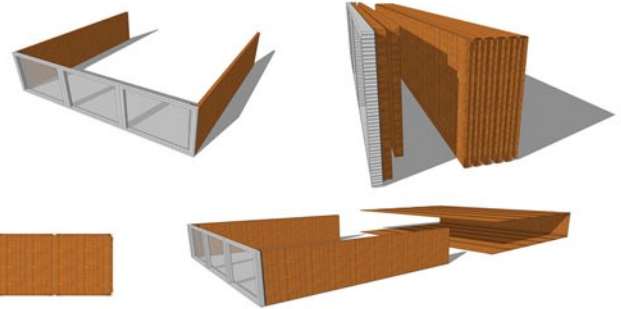
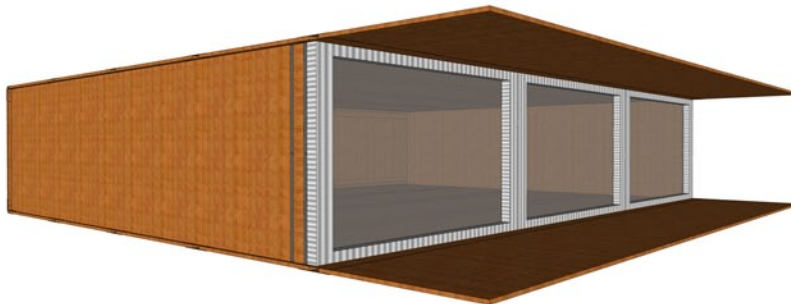
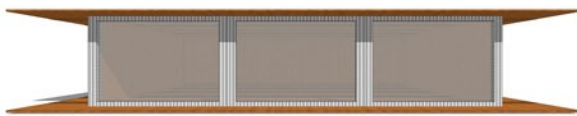
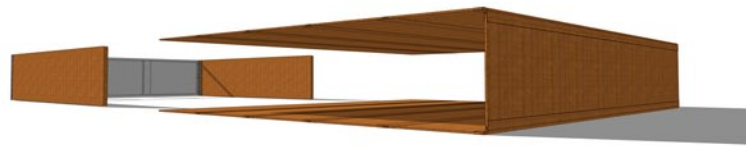
LOFTHITECH FENCE

You have a field with fence: why do not use these fences to quickly create living spaces?

Angled, side, Lofthitech Fence can be transplanted easily on a wall (s) ensuring good sealing even on curved earth walls.

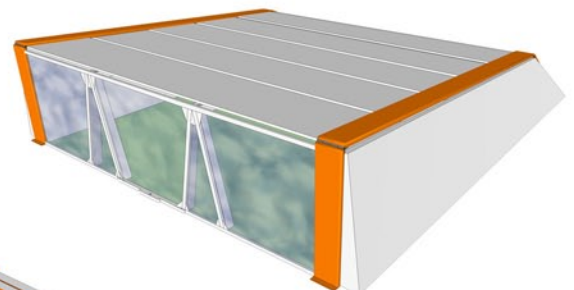
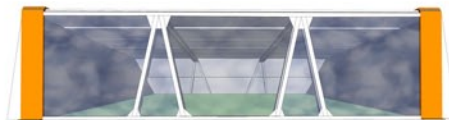
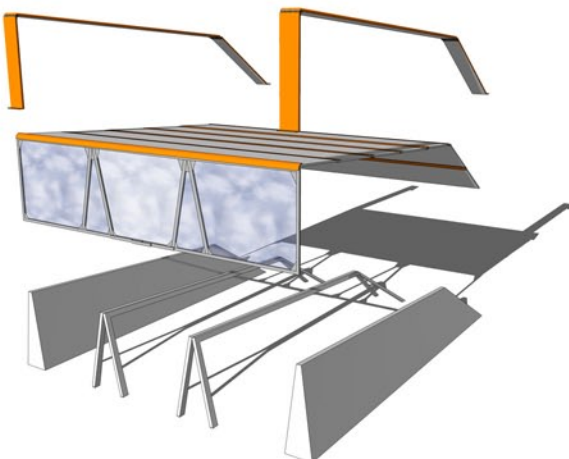


LOFTHITECH YIN YANG



Modular construction "ying yang" called, ultra simplified consisting of only two components: a "U" inside composed of bay window and sandwich panel walls foldable unfoldable and a 2nd "U" outer covering the first consisting of interconnected panels sandwich by soft material and resistant to folding-unfolding. In transport mode this design allows maximum optimization of the space occupied. The sandwich panel to the entire structure. The inside part may be of equal size or less than the outer overlapping portion, and placed depending on the choice of the user. Unfolding and fixing all is done preferably by lifting crane with manual assistance in record time. The structure can be set on any type of soil.

LOFTHITECH STAR



Modular construction ultra fast assembly without tools consisting of:

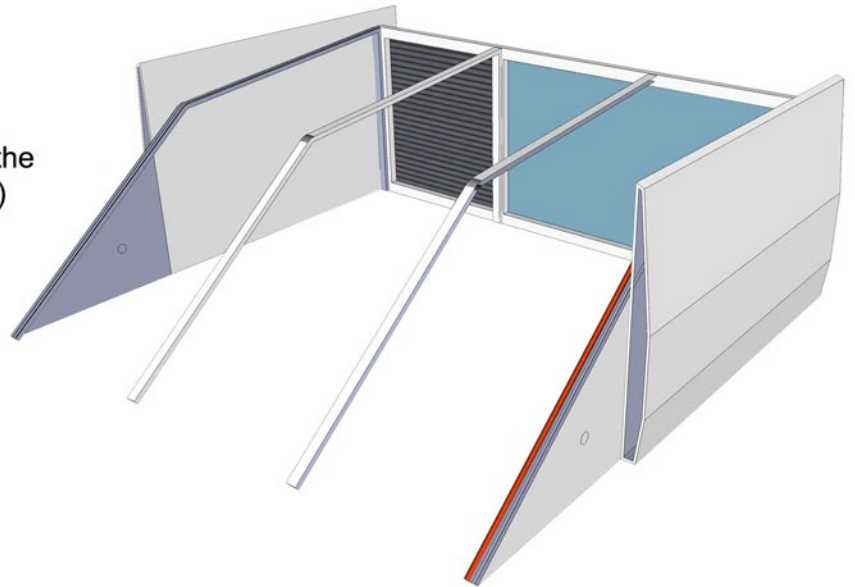
- 1 / triangular block-structure (self stabilized / anti drop)
- 2 / glass bay and roof in one piece unfoldable (Unfolding the roof and bay in one single operation by cable pulling)
- 3 / locking bars (bolt on ground or on down lateral blocks)

DWL Area: 36 M2 (6mx 6m) duplicable without limit. standard ceiling height: 2.60 M.

Options: interior dividers / walls / floor / Hi-macs mini pool / Screen shade / automatic solid door front closure.

LOFTHITECH RM50

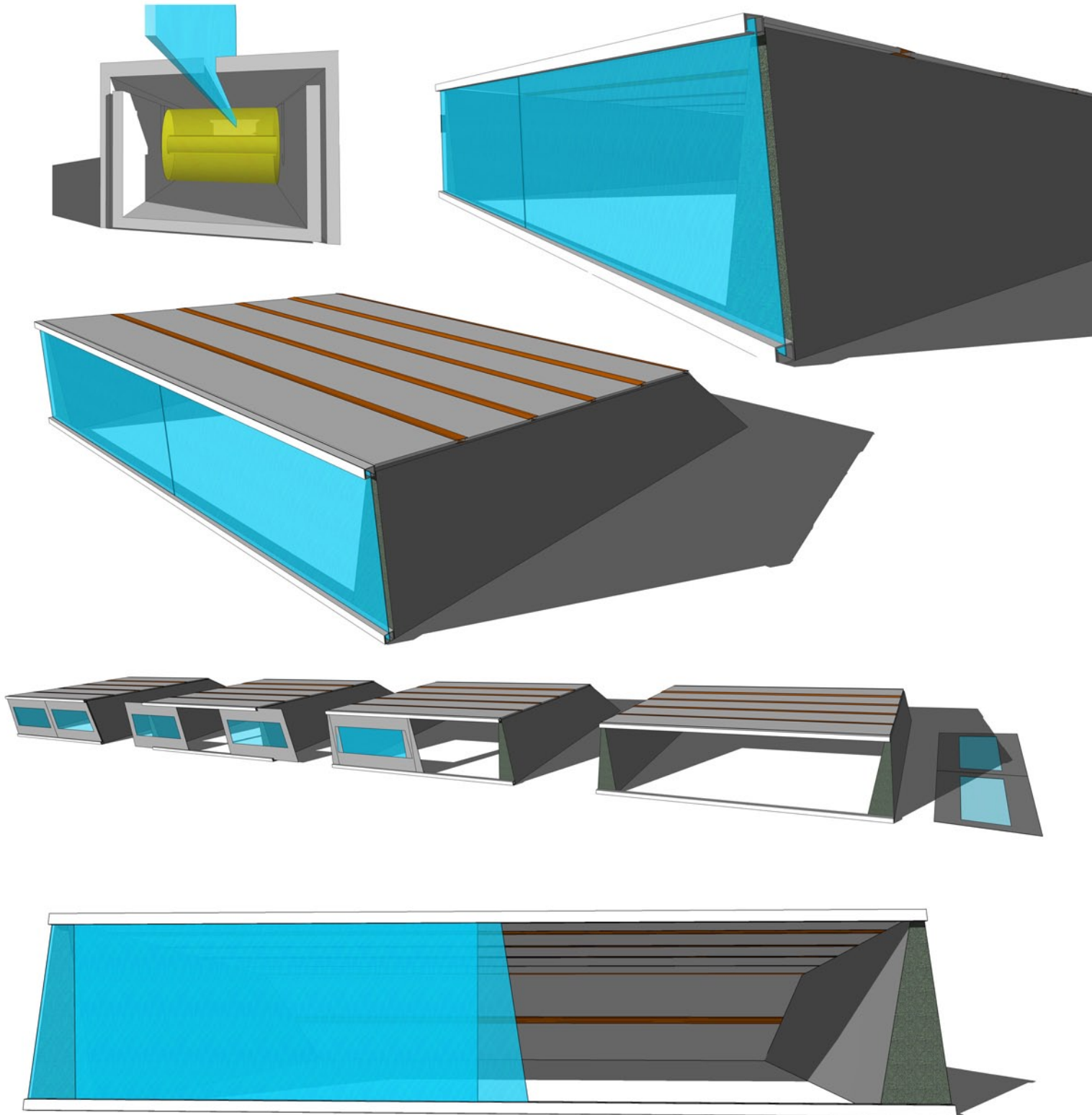
Originality: roof background exceeding the length of the blocks (roof "à la mansart")



RM50 Lofthitech

Lofthitech RM50 is a variant of loft Gate SLIM: slim blocks 20 cm thick, sliding glass door, foldable roof (sandwich panels interconnected). Ultra simple: three elements to deploy and secure together by wing nut. Seals and ducts incorporated in the side blocks. Originality: roof background exceeding the length of the blocks (roof "à la mansart") DWL Area: 24 M2 (6m x 4m) duplicable without limit. Standard height units: 2.50 Meters Optional portholes. Other options: floor / Hi-macs mini pool / Screen shade.

LOFTHITECH SKATEBOARD WHEEL WINDOW



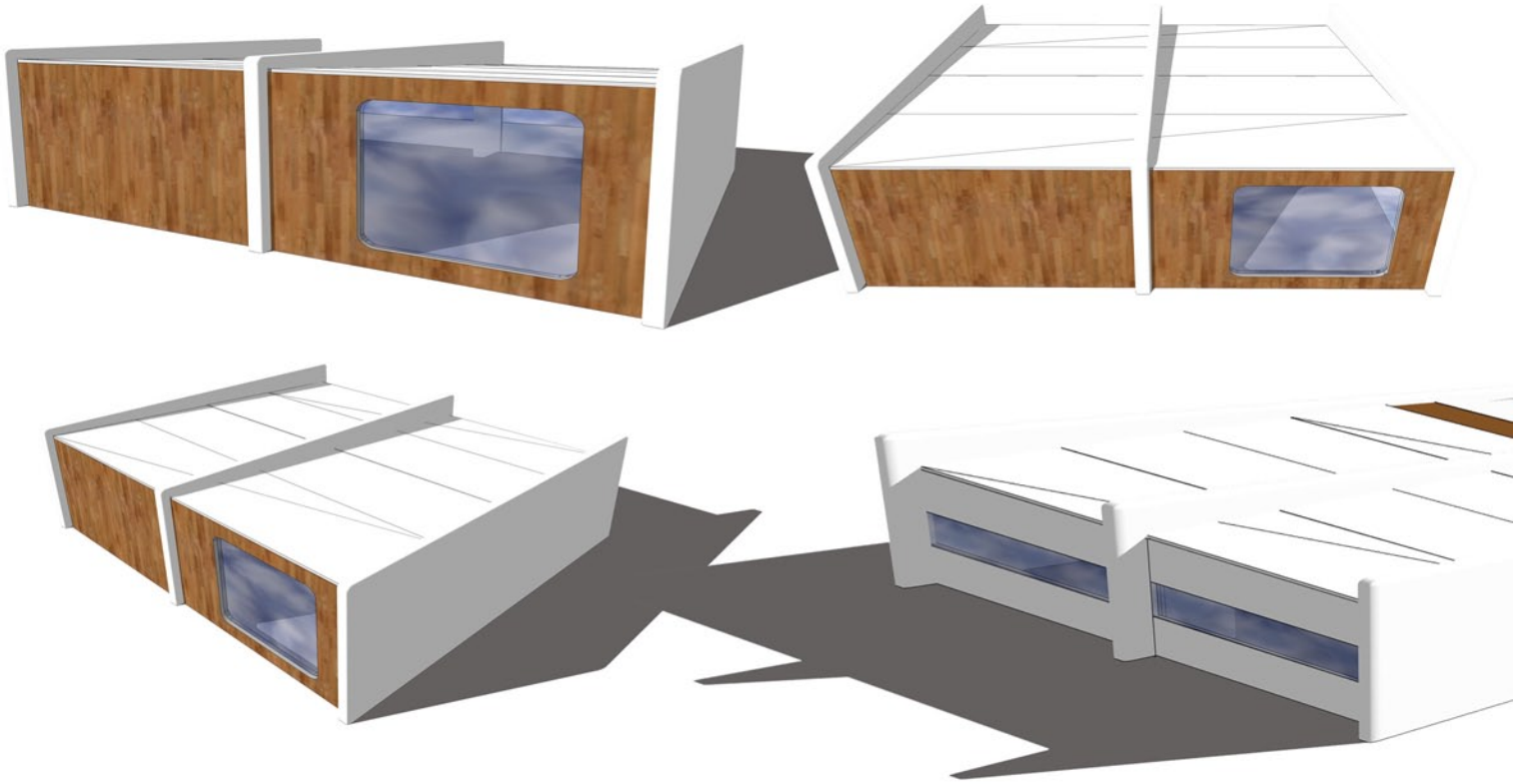
SWW: Skateboard wheel window. This model possesses 2 hard glazing solid polycarbonnate (250 times more resistant than glass) placed on guide rails equipped with rubber wheels and wheel bearing skateboard type: results: very sleek lines of the façade "all glazing" and easy and silent movement of 2 berries skating on glass, which can be removed for easy on side disassembly.

Top image : 12 meters x 12 meters: 144m2

DWL Surface: 36 M2 (6mx 6m) duplicable without limit. Standard block height: 2.20 Meters

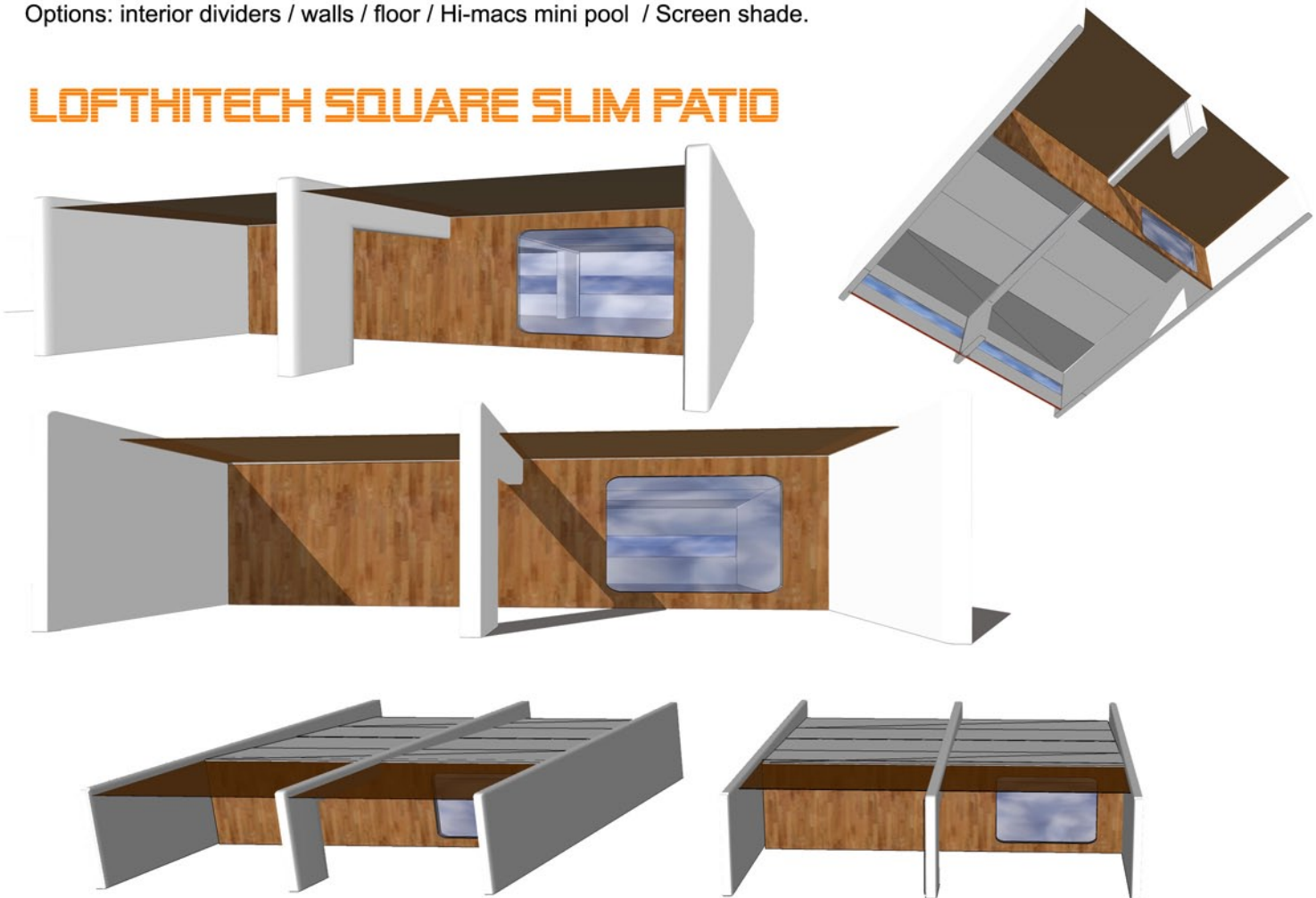
Options: Window / door window / walls / floor / Hi-macs mini pool / Screen shade.

LOFTHITECH SLIM SQUARE

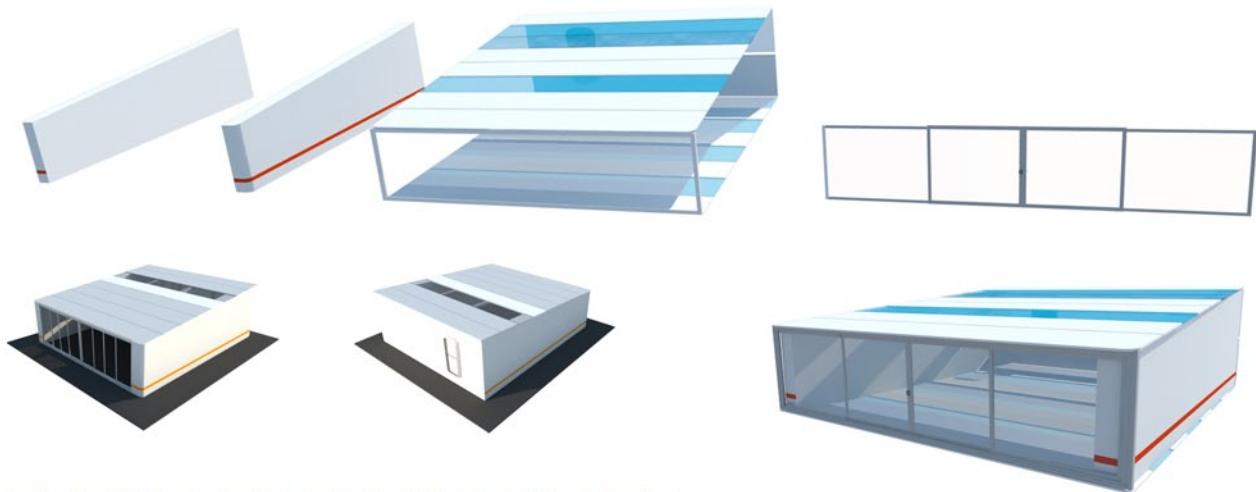
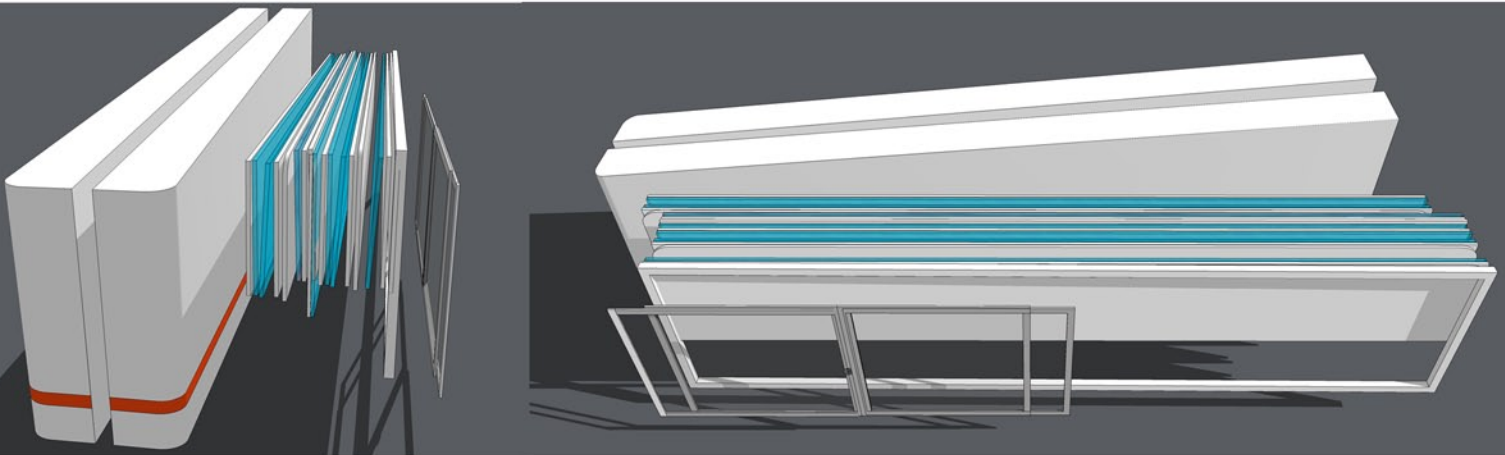
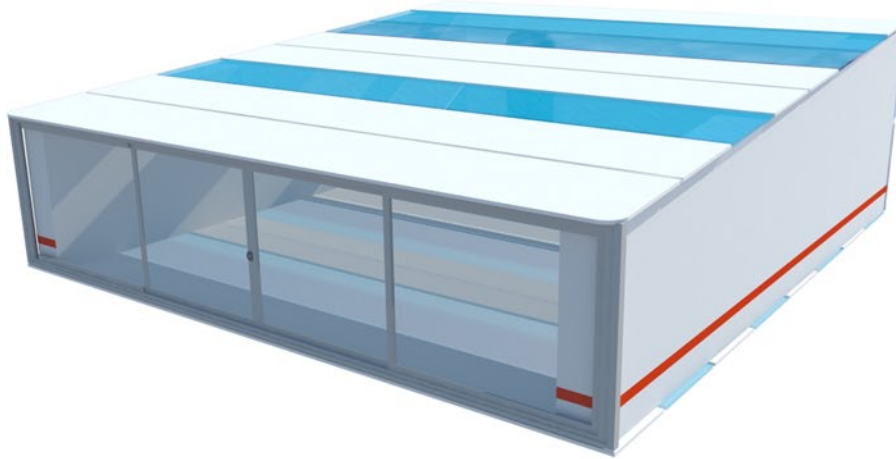


The slim square lofthitech consists of block structure for 20cm thick square-shaped with rounded, Sliding glass windows to rollerblading, sandwich panels "deco" (pattern choice), and metal center supports. Ultra simple: three elements to deploy and secure together by wing nut. Seals and chutes incorporated blocks - side structure and roof. DSL Area: 36 M2 (6mx 6m) duplicable without limit. standard ceiling height: 2.28 M. Options: interior dividers / walls / floor / Hi-macs mini pool / Screen shade.

LOFTHITECH SQUARE SLIM PATIO



The lofthitech slim square patio in addition has a patio area with Ombriere/tarpaulin retractable in front of the loft, ideal to relax outdoor with friends. Prolongation of block structure 4 meters forward (standard).

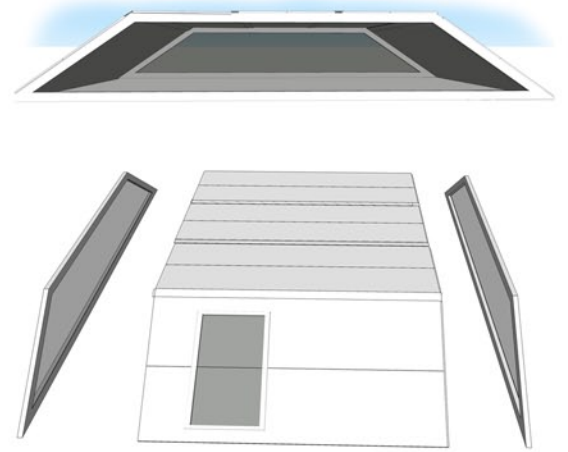
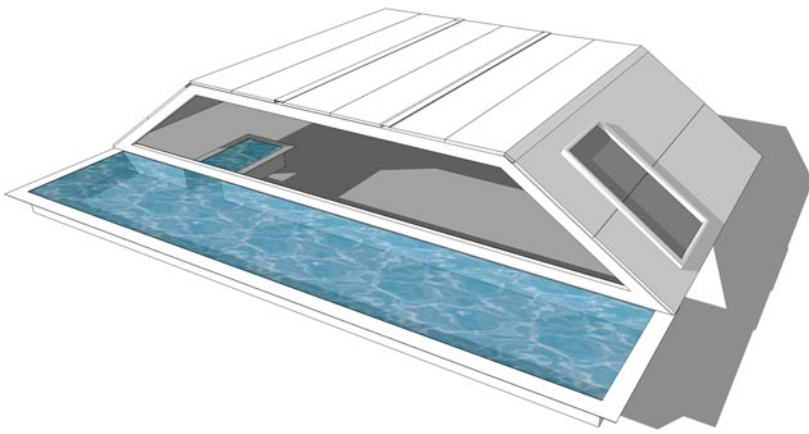


LOFTHITECH SCRATCHLOFT

The Lofthitech "Scratch Loft" can be settled as quickly as donning a wetsuit (almost) put the two structure blocks to the right place (plan provided), unfold the unfoldable "roof + rear bay", plug the sliding glass door into the notches of two blocks provided for this purpose, place the folded roof and rear. The rigid part formed by the sliding window stabilizes the entire structure in addition to the velcro scratches (velcro pro + D profile seals) located in key locations to stabilize the structure. 2 bars of central support plates with fixing wiring finally ensures high resistance to strong winds. Very clever this loft scratch!

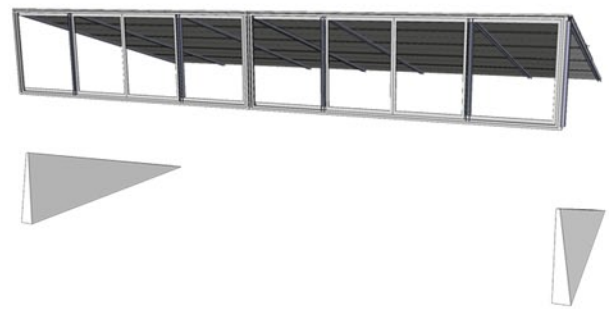
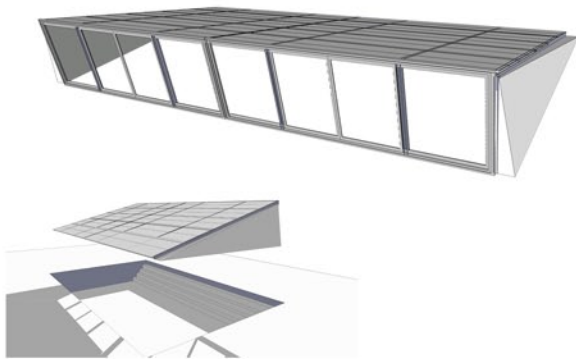
Materials : foam & tarpaulin blocks, 16mm interconnected polycarbonate plates, painted wrought iron support, aluminum profiles, velcro rpo tapes, sliding glass door 6 meters long, tarpaulin silicone, flexible PVC, flex seal, central support bars, shading plates (option).

LOFTHITECH GREENLOFT

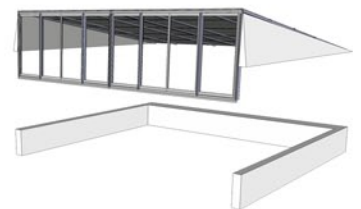


The green loft has 2 windows structure supporting a folding - roof Lofthitech (sandwich or polycarbonate panel). Ultra simple: three elements to deploy and secure together with wing nut. Seals and gutters incorporated into the windows - structure. DSL Area: 36 M2 (6mx 6m) duplicable limitless. Standard height: 2.20 Meters portholes doors on the sides. Options: floor / mini pool Himacs / shade structures

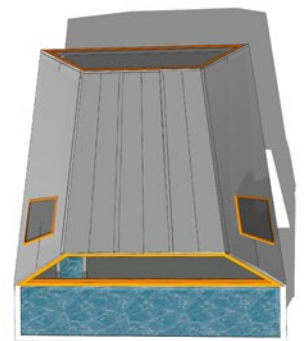
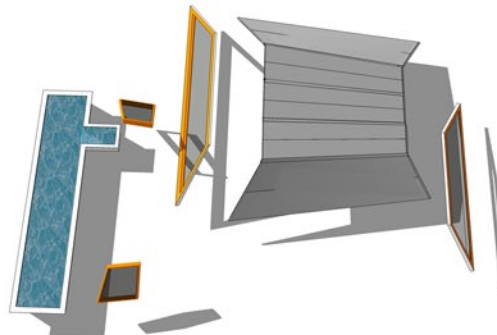
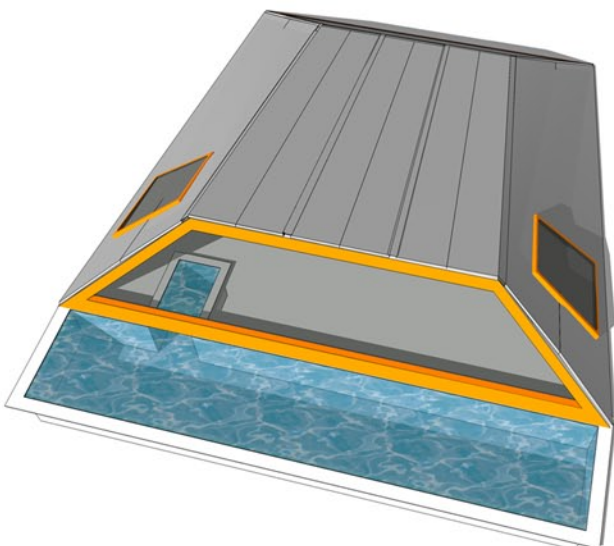
LOFTHITECH TRIANGLOFT



The triangloft: a foldable roof Lofthitech fixed on two triangular blocks structure : very easy to install : a cable is provided to unfold the roofs-bay plates along the blocks. DSL Area: 24 M2 (4x6) Height 2.2 Metres options: pre-installation of smalls walls or dug ground to increase the ceiling height.



LOFTHITECH TYPHOON



Designed to withstand winds of 480 KM / h, the Typhoon loft is similar in all respects to the Greenloft but with windows bay-structures and sides of the unfoldable roof inclined offering significant aerodynamic performances. DSL area: 36 m2 (6mx 6m) duplicable limitless. Standard height: 2.20 Meters Options: floor / mini pool Himacs / shade structures.

LOFTHITECH ABRIS

The easiest combination to create a living space, comprising only 2 items:

1 bay window structure and 1 folding roof.

install the unfoldable roof Lofthitech, insert the window bay structure in order to

lift the folding roof, fix the closing nuts by hand corner: structure bay and fold roof are secured.

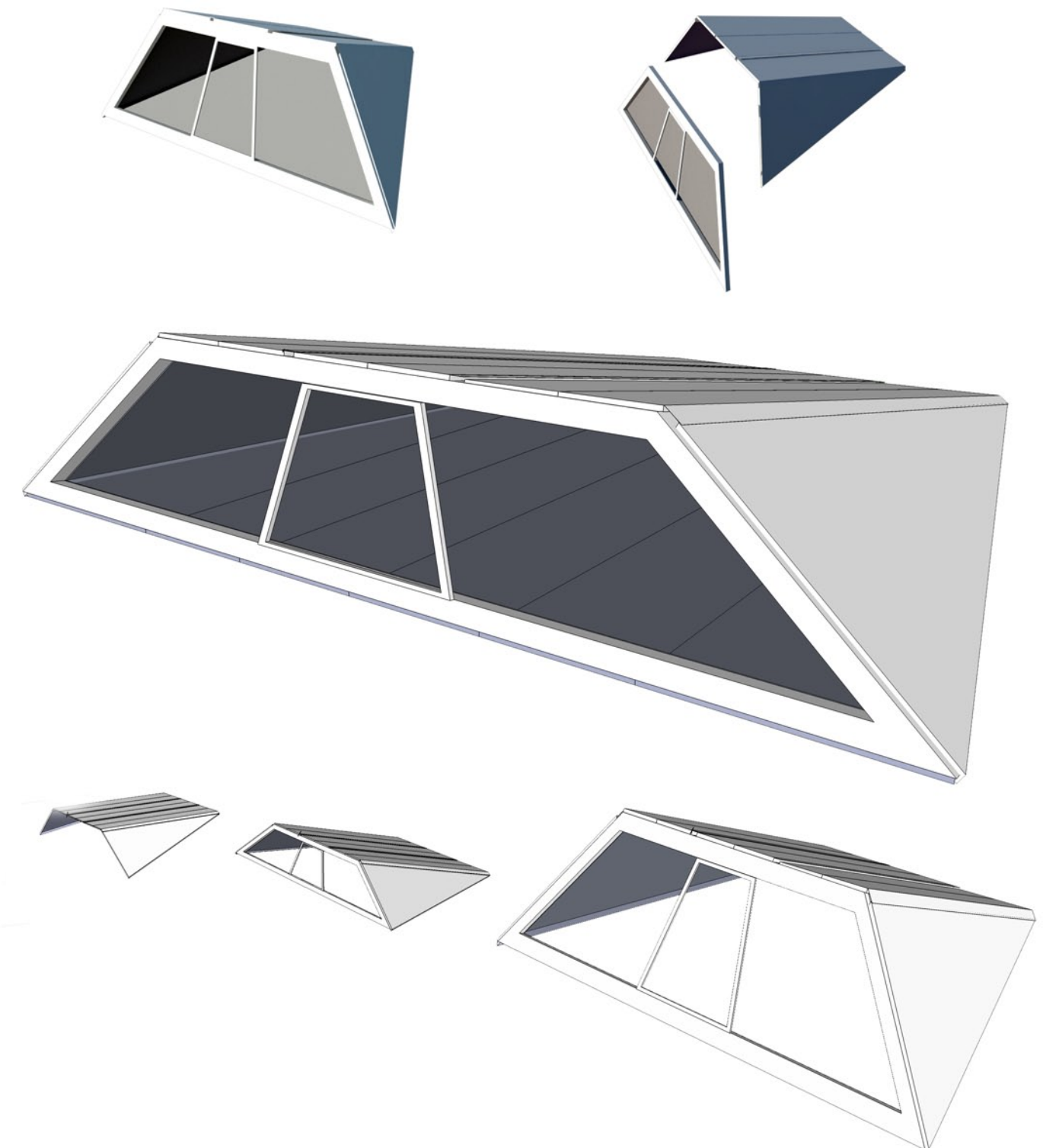
Options: top-loft bed loft Shelter / porthole door incorporated in the bay or sandwich panel / unfoldable soil lofthitech /

Possibility of adding a Ombriere over the entire upper surface of the loft, attached to the top of the blocks

to a temperature drop of about 15 ° C. The flexible or semi flexible elements ("blob") provide the sealing of the loft, sandwich panels provide thermal and sound insulation, Ombriere between 20 and 40 cm above the roof changes the climate. Possibility of doubling the roof fold Bay (cold climate).

Standard internal surface: 36 m² (6M X6M) standard height 2.80 million (or 3.20 or 2.50 or 2.20 or 2).

Minimum surface Lofthitech Shelters: 9 M². maximum: 72 M²



LOFTHITECH GATOR

Similar to Lofthitech Gate 1/2/3 with the following features:

Retractable wheels incorporated into the structure blocks for their displacement without difficulty:

single activation handle to lift the blocks and make them movable in all directions.

Span width 40 cm block structure (intermediate size) much lighter but still providing a robust and protective aspect of living space located between the two blocks.

Number of metal support bars divided by 2: lower complication for the installation of the metal frame of the loft.

Male female cork at the ends of the luxurious wooden blocks (teck / ipe / iroko) or Himacs, allowing to easily add more blocks (nesting) if loft expansion needed.

Rounded or semi rounded metal bracket to the bottom for easy folding Lofthitech unfolding roof sandwich panel 5 cm (up to 30 M.) by simply pulling through a cable connected between the winch base on the first roof plate and a winch or vehicle.

securing all the elements by setting on metal substrates by the folding roof bay.

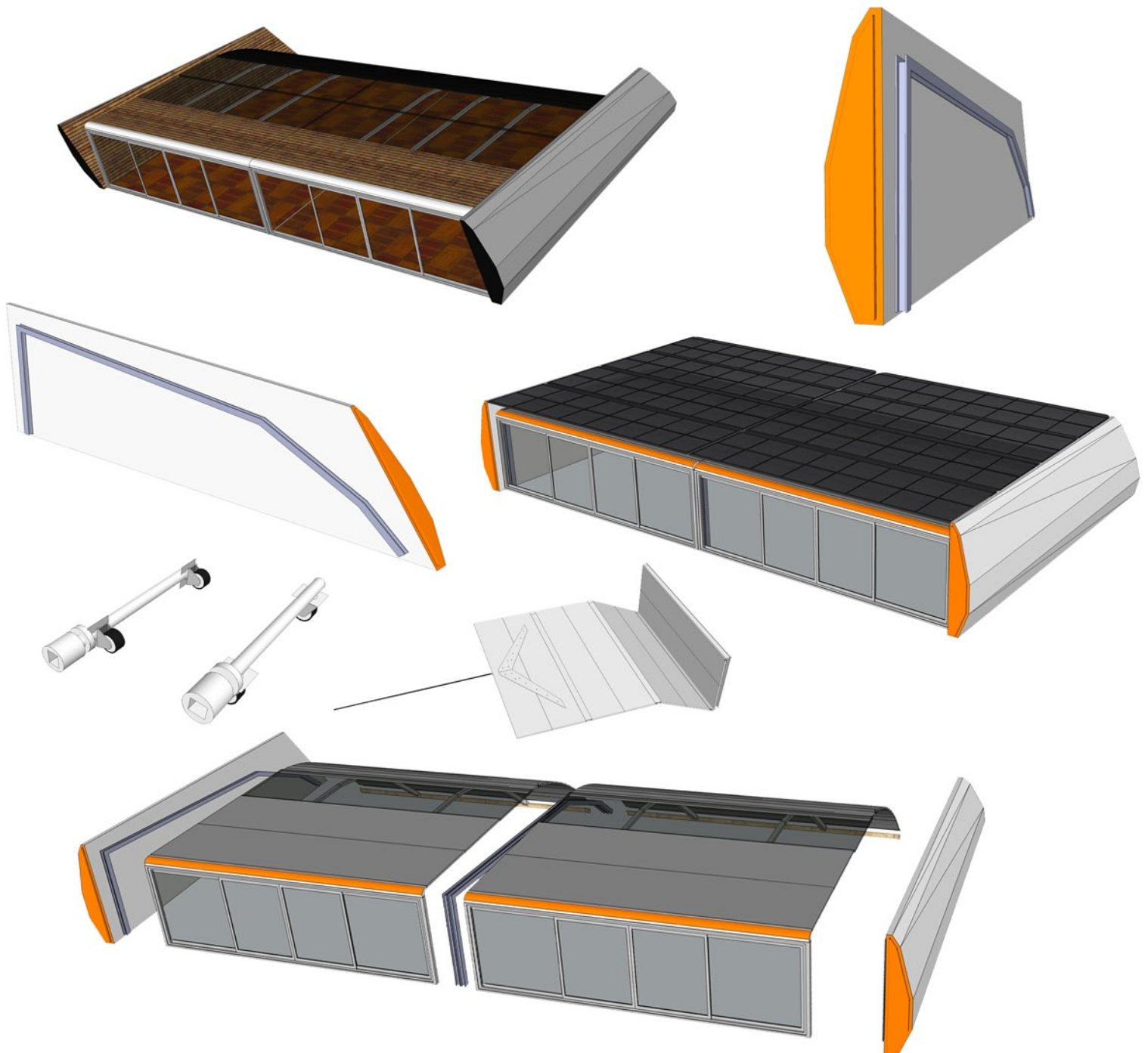
Lock folding roof bay: 1 locking bar down the front bay window and another one at the back of the loft.

Possibility of adding a Ombriere over the entire upper surface of the loft, attached to the top of the blocks to a temperature drop of about 15 ° C. The flexible or semi flexible elements ("blob") provide the sealing of the loft, sandwich panels provide thermal and sound insulation, Ombriere between 20 and 40 cm above the roof changes the climate.

Possibility of doubling the roof fold Bay (cold climate).

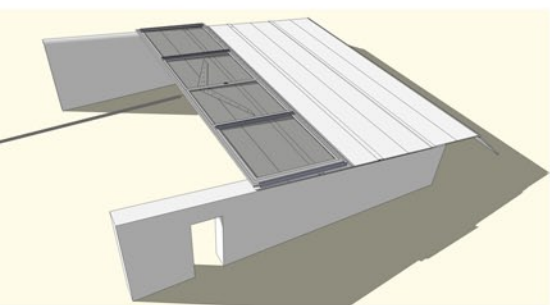
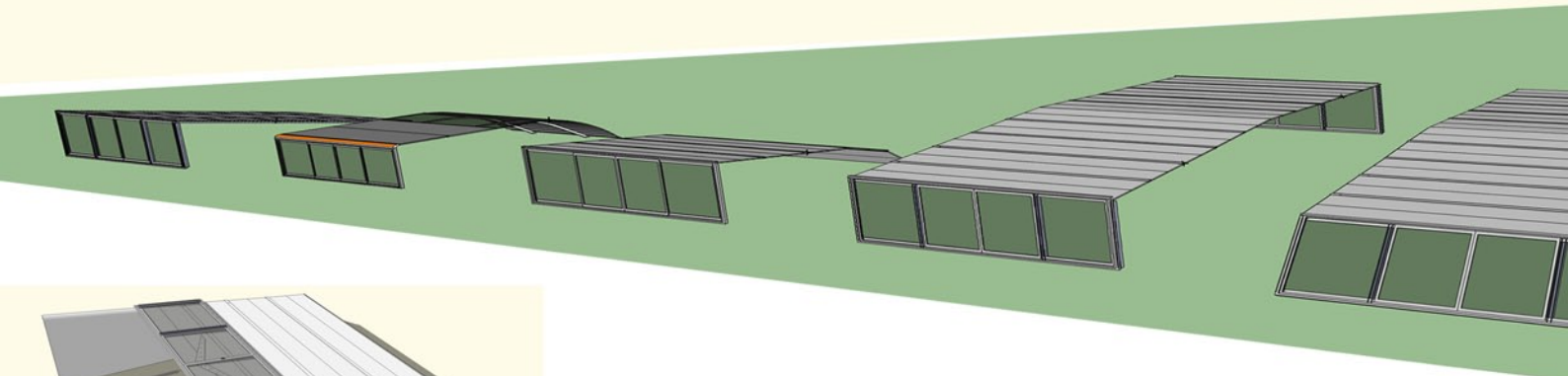
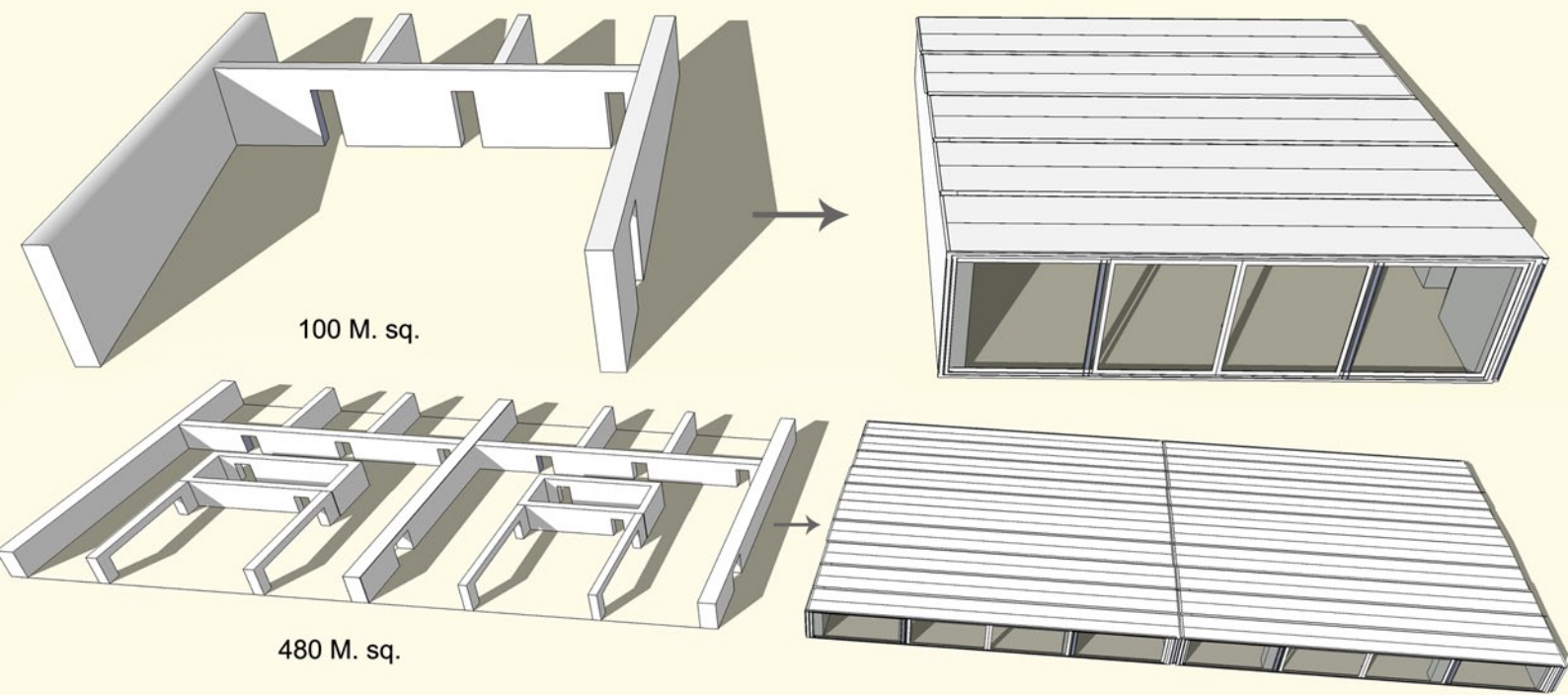
Internal DSL Area: 36 M2 (6M X6M) height 2.80 meters (or 2.50 or 2.20 or 2).

Minimum surface Lofthitech Gator: 18 M2. maximum: 624 M2

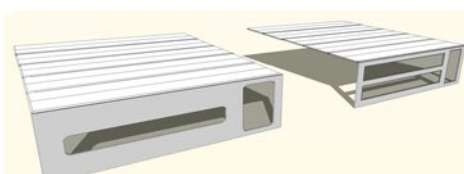


LOFTHITECH LOFTERRE

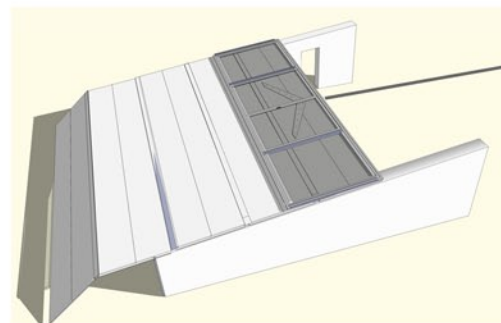
The Lofterre is the most economical and easiest living space in the world to build : You prepare a slab and earthen walls (or other material) and you deploy the unfoldable LHT Bay Roof in minutes by tensile cable. Then you just have to fix the bottom of the front and rear windows to the slab (Fixings supplied). On one hand you have a "beldi" building part associated with a modern and design part with large windows that give an immediate luxury style to your living space. The unfoldable Lofthitech roof is usable anywhere in the world and can be doubled if necessary. Several formats are available depending on Aesthetics selected: square, rounded, semi rounded, sloping right, double bay window, aluminum frame window bay, or portholes incorporated to sandwich panels or polycarbonate panels (door window / bay window / well of light) Length: up to 30 meters. Width: up to 12 meters



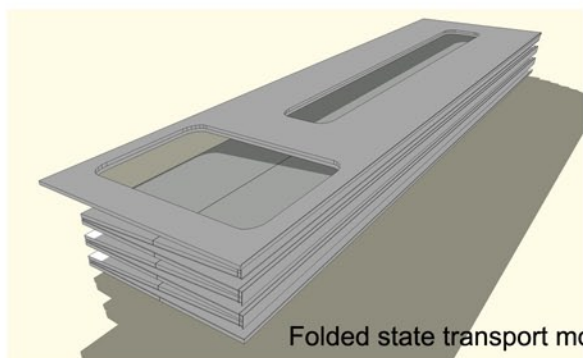
deploy the unfoldable LHT by tensile cable



Portholes embeddable to the plates



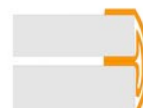
deploy the unfoldable LHT by tensile cable

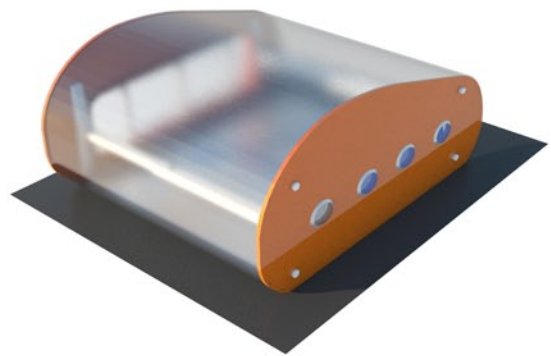
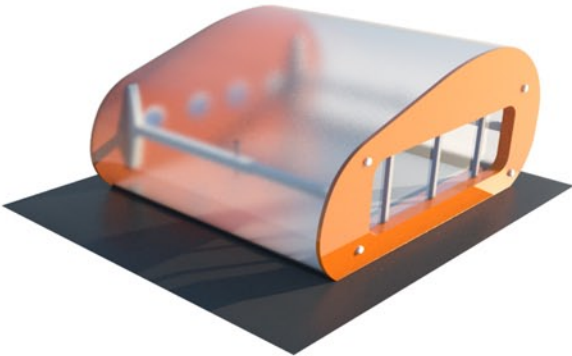
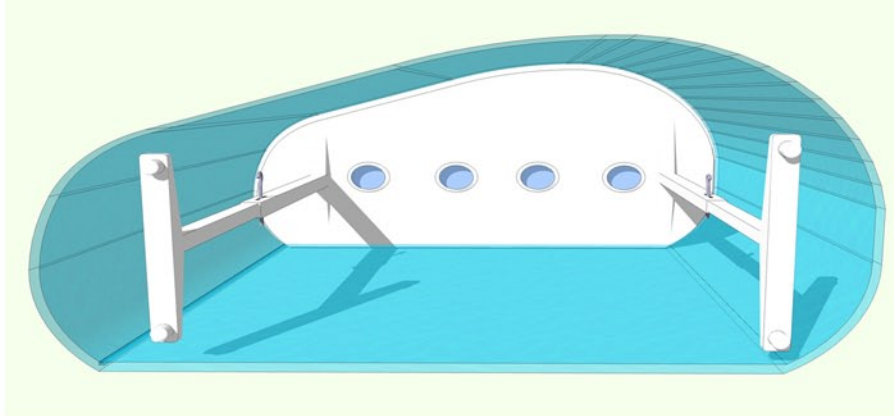
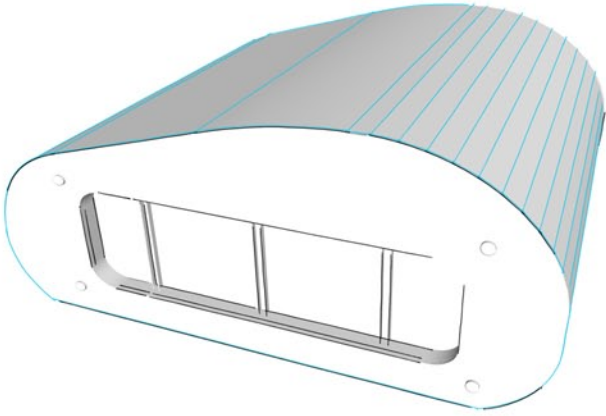
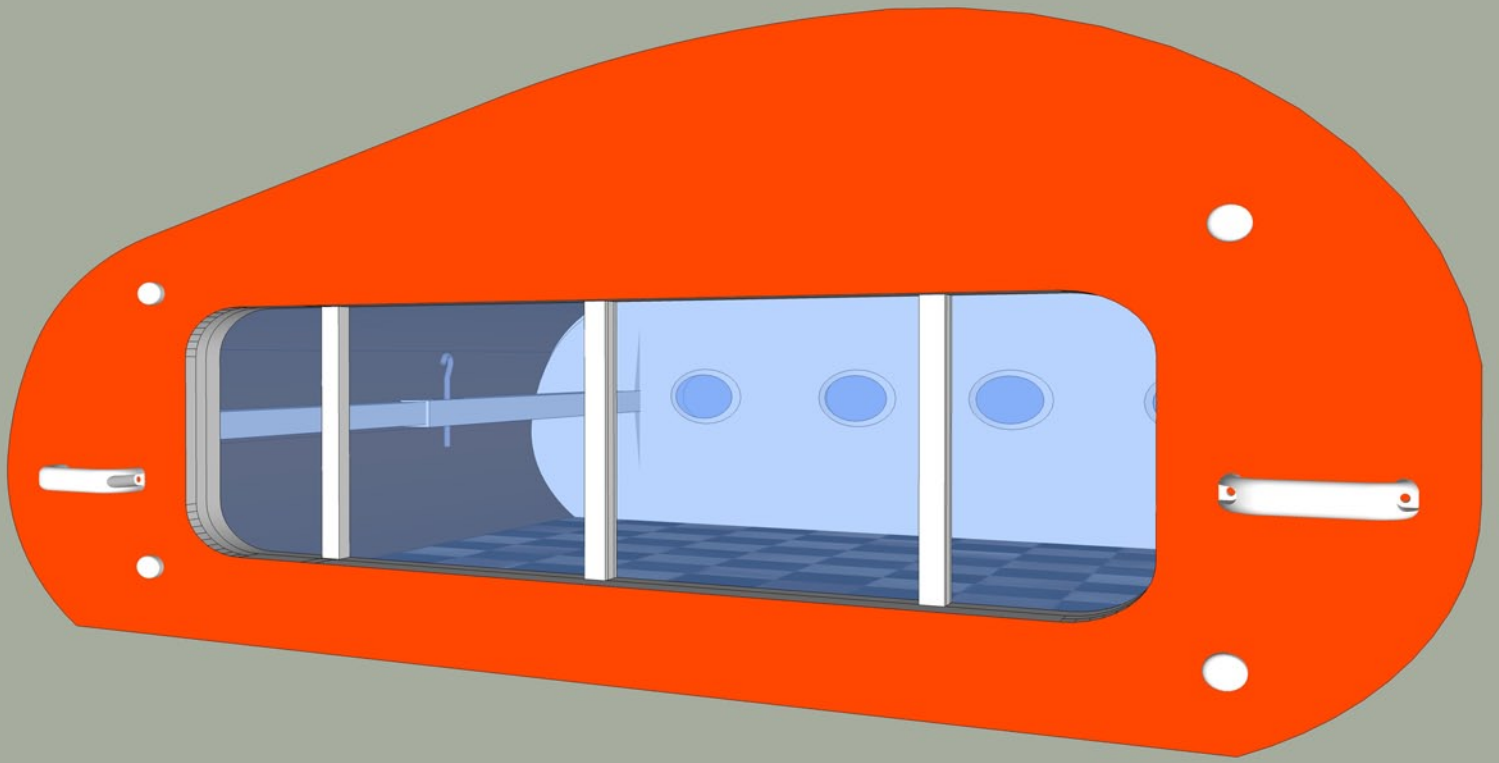


Folded state transport mode



Inter-plates profiles



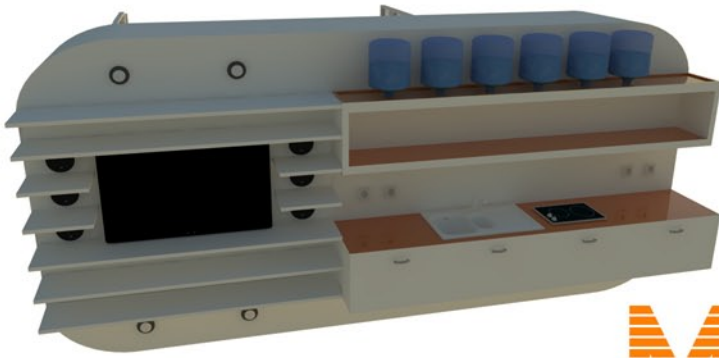


LOFTHITECH VERIN

Reinforced sandwich panels, sliding windows, tarpaulin tensed by verins-structure, windows, polycarbonate unfoldable soil.

This lofthitech arises in 10 minutes. Just unload the truck or trailer, unfold like an accordion and install and adjust 2 verins-structure inside it. To put on any type of ground, tamped and stable.

Materials: Reinforced sandwich panels, aluminum sliding window, silicone cover 1mm, *foam insulation (optional), fixing aluminum profiles, verrins wrought iron, wrought iron window, porthole, non-skid polycarbonnate plate.



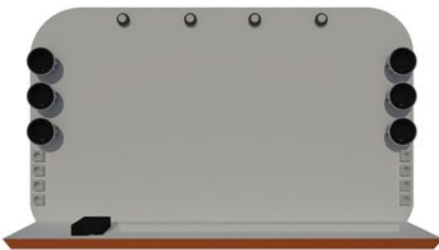
MW



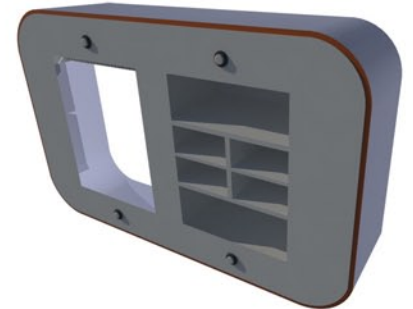
K



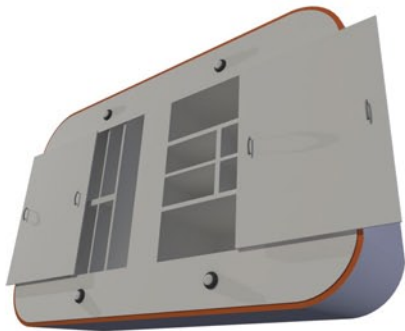
S



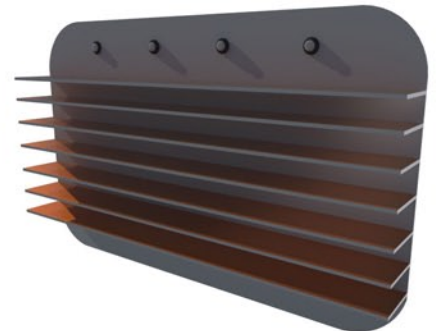
AV



D



P



B

LOFTHITECH "WALLS"

The "Walls" are prefabricated walls equipped with useful elements preconnected for everyday life (Shower toilet, kitchen, storage closet, dressing room, stereo computer audiovisual, library ...).

The "Walls" are ready to be installed and connected (one simple electric connexion & one simple water supply connexion) independent mode (solar kit, water tank and removable block of wastewater) or connected to the water & energy network of your town.

K kitchen block, Block B bathroom, audiovideo AV block, dressing block D, C closet storage block, block L library and finally the star of the "walls": the "Mega Wall": complete block multi-services multi use for open space. Multi Functions & Multi use for housing or offices in one single piece consisting of:

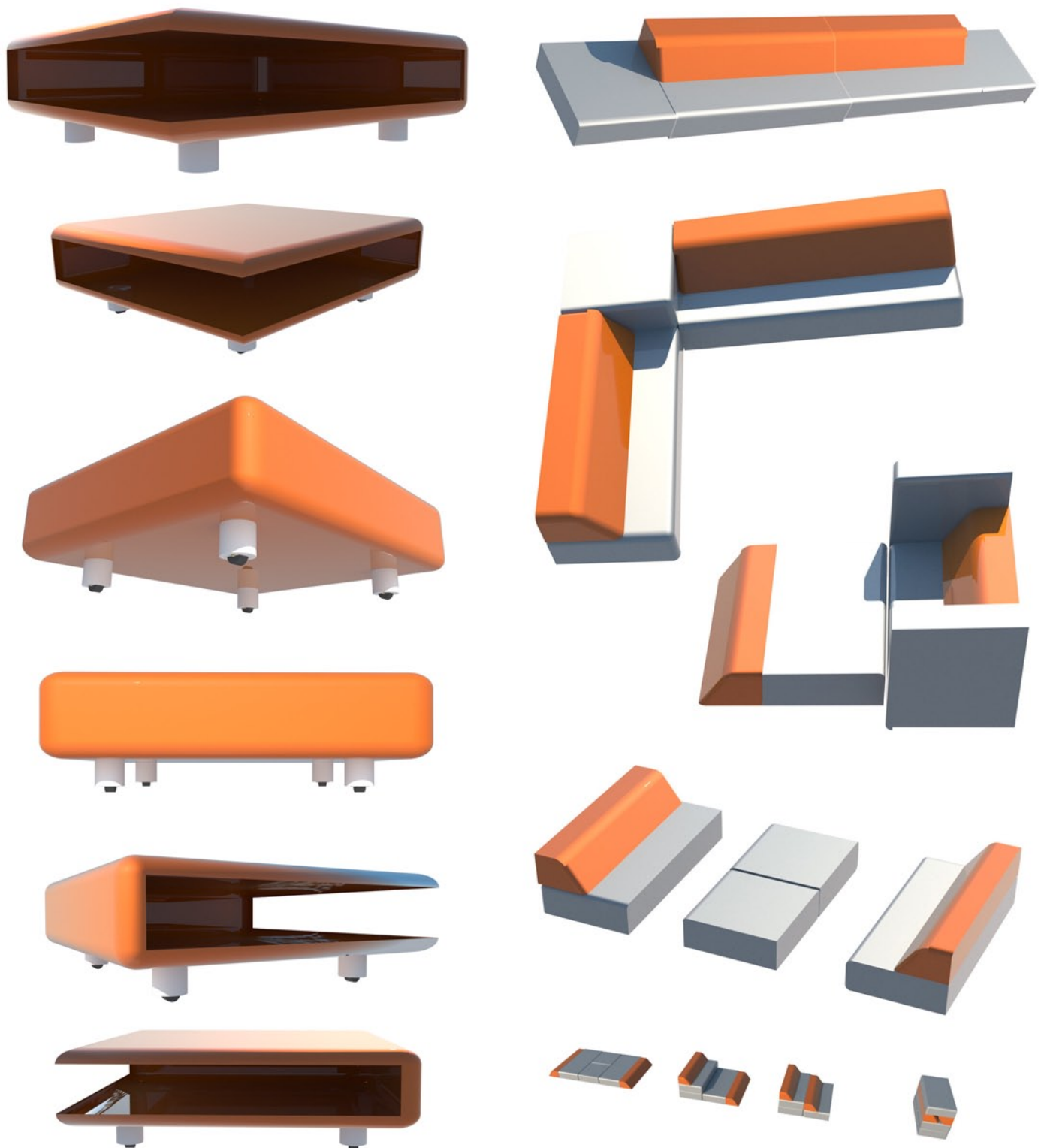
Recto:

kitchenette with hot plate, sink, closet, shelf, drinking water refills, LED lighting, electric jacks, library, stereo tv and electric devices connexion

Verso:

dressing, closet, various storage, bathroom with shower, toilet, sink, mirror, shelf, LED lighting, electric jacks, waterproof trashcan, separators accordion door.

Mega Wall is ready to connect to the electricity/water supply network or totally independant: refill water by bottle insertion on the top of the kitchen shelf, and solar energy or another autonomous energetic source.



LOFTHITECH COFFEE TABLE & MULTITRANSFORMER COUCH

COFFEE TABLE

Cheap but ... beautiful, practical and original.
 Design coffee table and storage on ultra quiet casters.
 Very good finish. Moves easily. Can be used as a transport
 for example kitchen service. Dimensions: 1-x M y M z-0.5-1M
 Materials: MDF carved lacquered or hi-macs (waterproof) and
 accessory Chrome (hiding wheels protection) and silent wheels

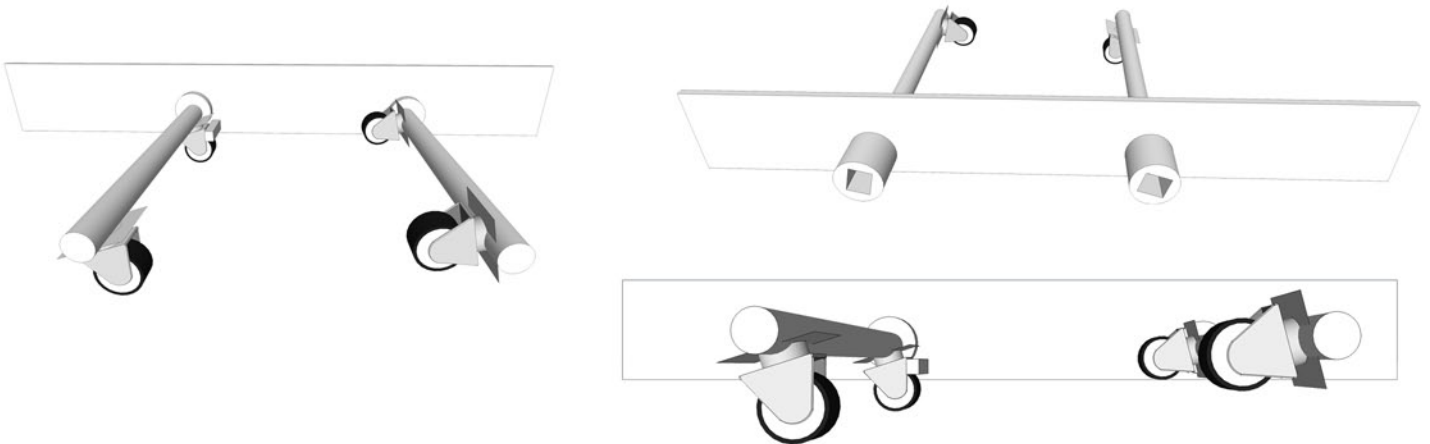
MULTITRANSFORMER COUCH

Depending on the needs of the moment : turn your couch into 50 different positions Living room couch, mega
 mattress along the pool, long sofa, sitting "face to face" with a coffee table in between, storage position, home
 cinema, position 5 beds... See description pics. Transform your living room "multitransformer" in more than 50
 useful positions. Quite well thought out, isn't it ? Orange and gray (or other colour) leatherette or silicone tarpaulin
 (interior exterior) . Too Cool this multitransformer couch ! Dimensions: 2 x M y-z-1M-0.8M x2 + x-y-1M 1M-0.8M z
 Materials: leatherette or silicone tarpaulin, 2 foam hardness 2 floors, collage and
 seams. optional : velcro tape or hidden magnetic strip to improve position support.

LOFTHITECH ACCESSORIES FOR TRANSPORTATION

Retractable wheels system embeddable to structure-blocks Lofthitech and activated by a simple lever. Rolling or stabilizing position: a lever (supplied) allows you to rotate the axis on which are welded 2 wheels synchronized and semi multidirectional.

You can easily move the blocks of your Lofthitech, even if it weighs 800 kg



Transport trolleys:

easily and at lowcost move your unfoldable plates, blocks, window bays, metal brackets or any other item with the LHT soft plateau & anti scratch or endomagntment trolleys (tarpolined high strength foam)

Weight capacity: 300 kg / 1 wheel or 2400 kg (2 trolleys with 4 wheels)



Unfolding cable :

Length: 15 Meters

Attach the hook on the first plate of the unfoldable roof, pull at several people to unfold the plates for covering your loft. If the unfoldable roof is made of heavy sandwich panels: use the trailer hitch attaching it to the towing ball of your vehicle. Cable with a damper part to avoid traction shocks. Help the unfolding operation by guiding the plates manually. For the unfolding operation it is recommended to be at least 4 people.





LOFTHITECH OPTIONS : SOLAR KIT & VINYL ADHESIVE

SOLAR KIT

Total independence

Solar kit for isolated site with 230V AC output.

composition:

2x solar panels 80Wc (990x670x35mm)

1x charge controller 50A 12V

2x 12V 200Ah AGM batteries

1x pure sine inverter 12V DC - 230V AC 1000W

2x pairs of solar cable length 10m

Depending on your installation, standard kit changes can be made for comfort.

In some cases, the solar kit can be coupled to another mobile or autonomous energy source (vehicle, eolian, paddle wheel ...)

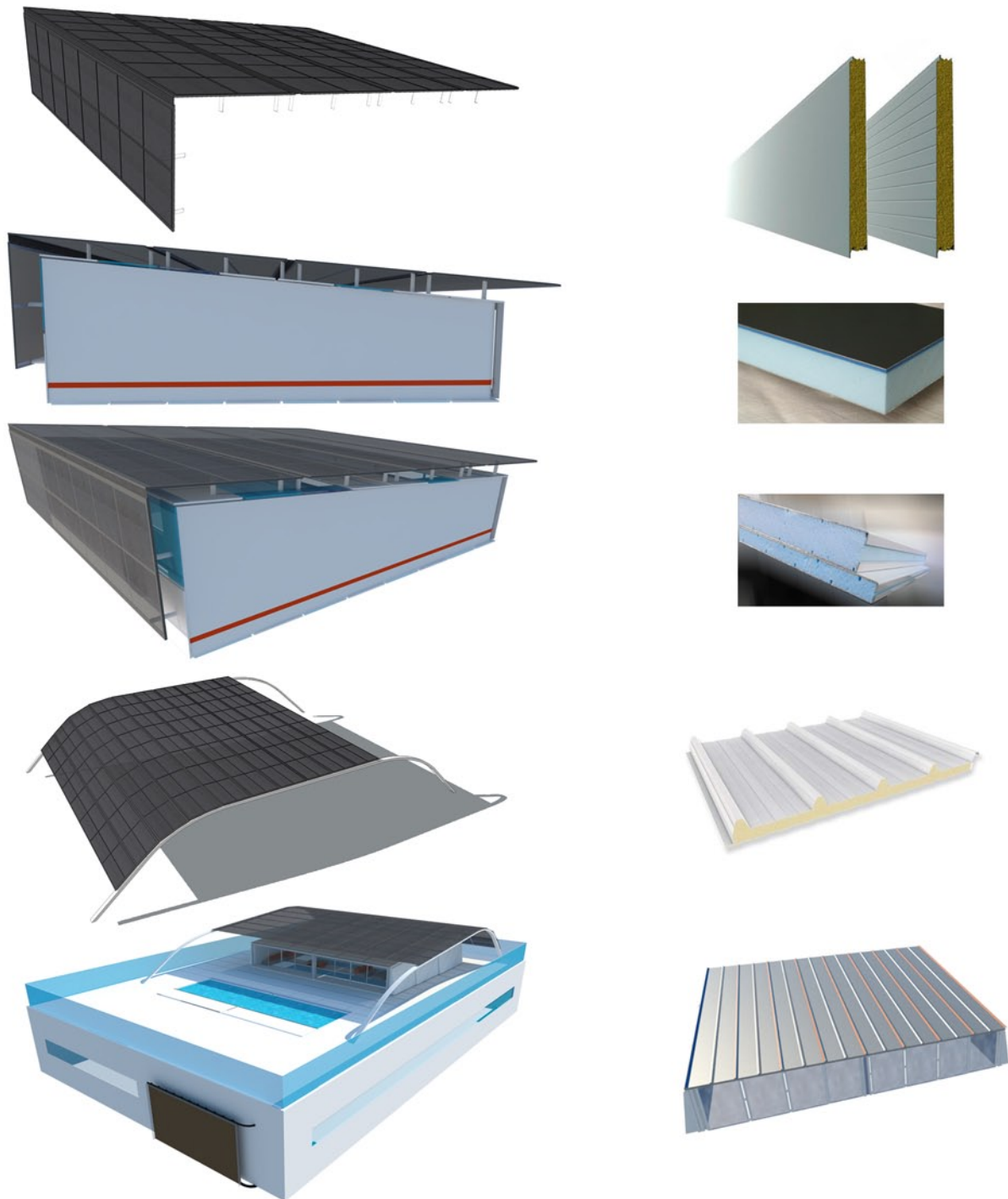
VINYL ADHESIVE

Decoration or communication. Tackle your ideas on Lofthitech elements. Printing and installation included.

Customize your interior or outdoor decoration or communicate about your company (stand, event, showroom, business space ...). Blocks, berries, insulation boards, the unfolded roof Lofthitech ... They are just waiting for your ideas to be stuck. Outside or inside, normal or micro-perforated. Adhesive vinyl fits all surfaces lofthitech elements. Indicated price per square meter.

Dimensions: square meter to measure

Materials: printed vinyl roll for exterior or interior



LOFTHITECH DOUBLING SEPARATORS

INSULATION PLATES ANTI COLD ANTI HEAT.

Summer or winter, you need to limit excessive temperatures.

Cutting & fasteners custom made included.

Sandwich panel with and without rib . Very good coating finish and closure "U" light gray aluminum. To put on the lofthitech roof plates to avoid greenhouse effect or simply protect from hot and cold. allows the recovery of rainwater (chute adapted + optional tank) . Can be doubled (15 cm thick double walls) . Possesses fasteners " locking bar " without tools. very easy to add to all lofthitech models available on this site. It can let appear long glazing between two panels... very design. Possesses joints to be able to follow the curved roofs Can be used to create interior wall separations custom made.

Materials: sandwich panels adaptable, waterproof protective flex seal, aluminum U closure . Locking bar. Separator walls with ground & roof fasteners (option for interior wall partitions)

SHADEHOUSE

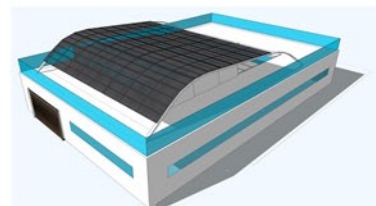
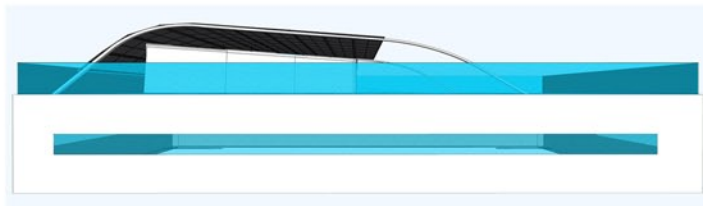
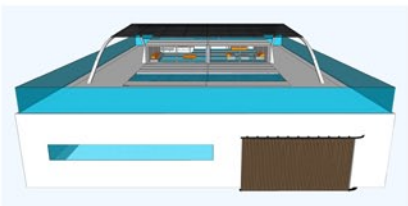
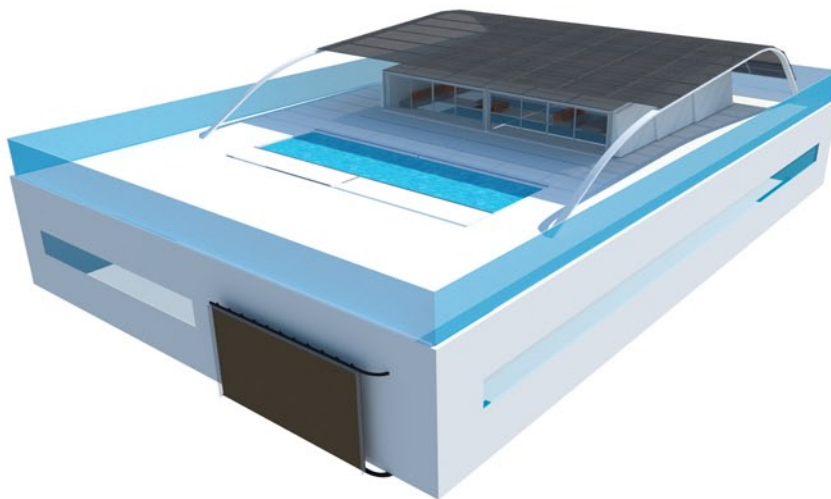
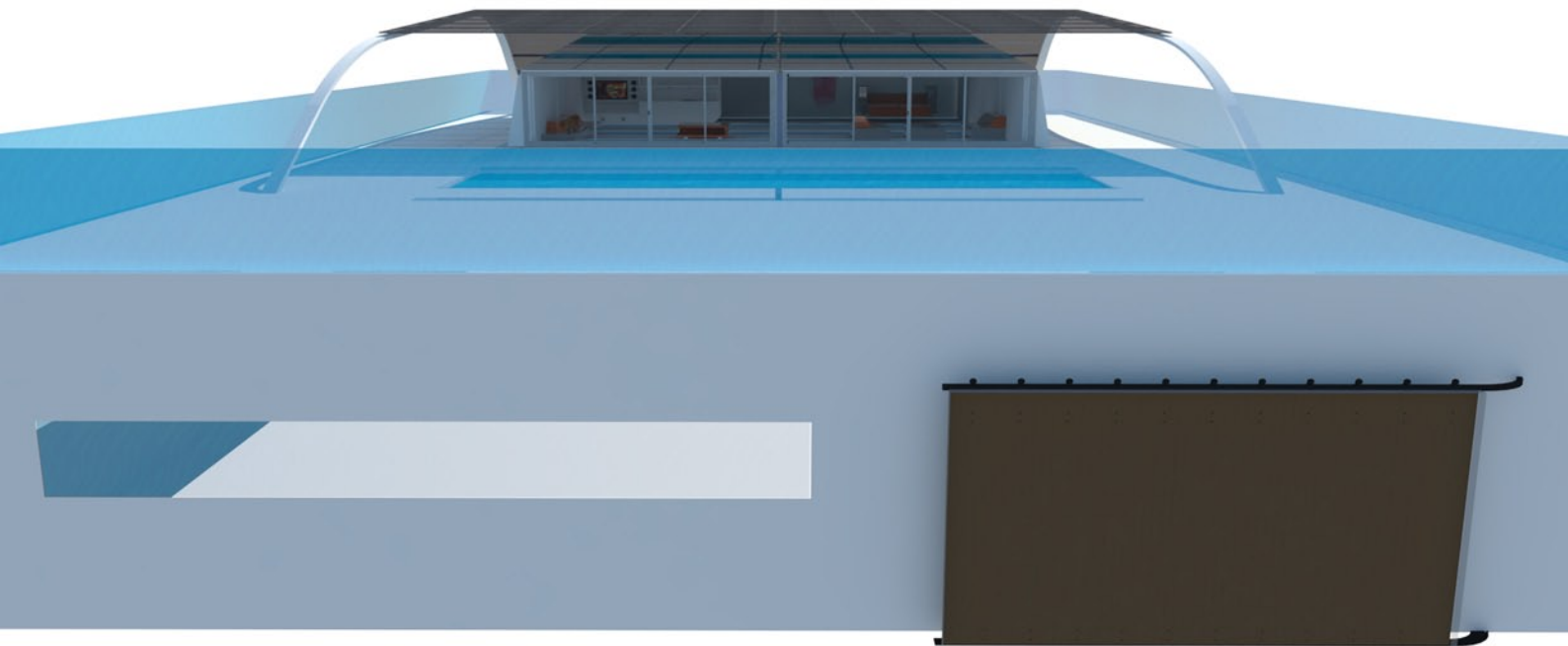
To drastically lower the temperature, a fixed Ombriere can be placed on the roof of the loft.

Material: Wrought iron lacquered treated, cable and wire, zip, U cover, backdrop nilon ultra resistant to extreme temperatures
price: per meter square installed

MOBILE SHADEHOUSE

To drastically lower the temperature, a shadehouse can be placed above the lofthitech, equipped with wheels on rails.

Material: wrought iron (lacquered treated), cable and wire, zip, U cover, backdrop nilon ultra resistant to extreme temperatures, rails for the displacement and immobilization of shadehouse plates
price: per meter square installed



LOFTHITECH R1

From 900 € / M2 HT construction, installation, connections (water and electricity)

Modular construction Lofthitech associated with solid construction.

Modular buildings Lofthitech in a simplified villa structure with pool terrace "pool house"

Hard materials: reinforced concrete structure traditional

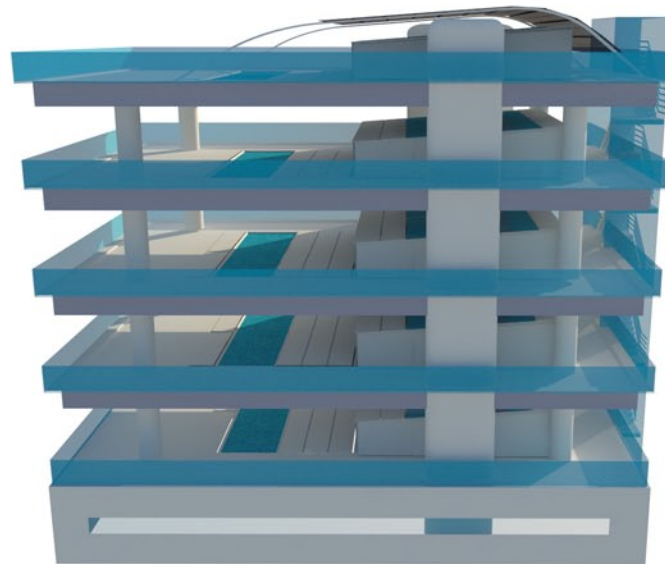
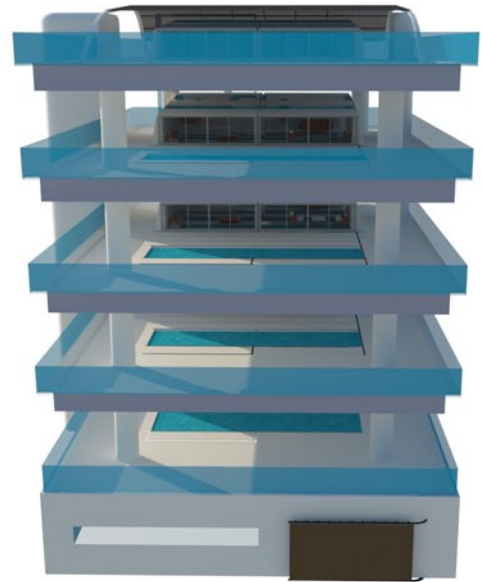
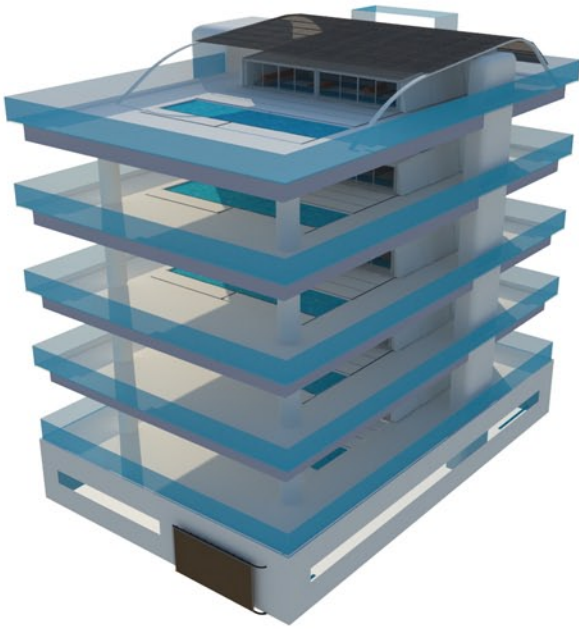
Dimensions: 500 m2 per floor

Total living area: 1000 M2

You have 1000 M2 but you pay only the 500M2 of the ground floor construction !!

That's the right plan Lofthitech R1: by placing a 9-150 lofthitech on the terrace,

you double your living space for 0 € !!!!



LOFTHITECH R5

From 900 € / M2 HT construction, installation, connections (water and electricity)

Modular construction Lofthitech associated with solid construction.

Modular buildings Lofthitech in a simplified structure of R + 5 building tray with pools

Option for the building: lift to person and / or vehicle freight elevator to access its pool house apartment directly with his vehicle.

Hard materials: reinforced concrete structure or traditional metal

Dimensions: 500 m2 per floor

Total living area: 3000 M2

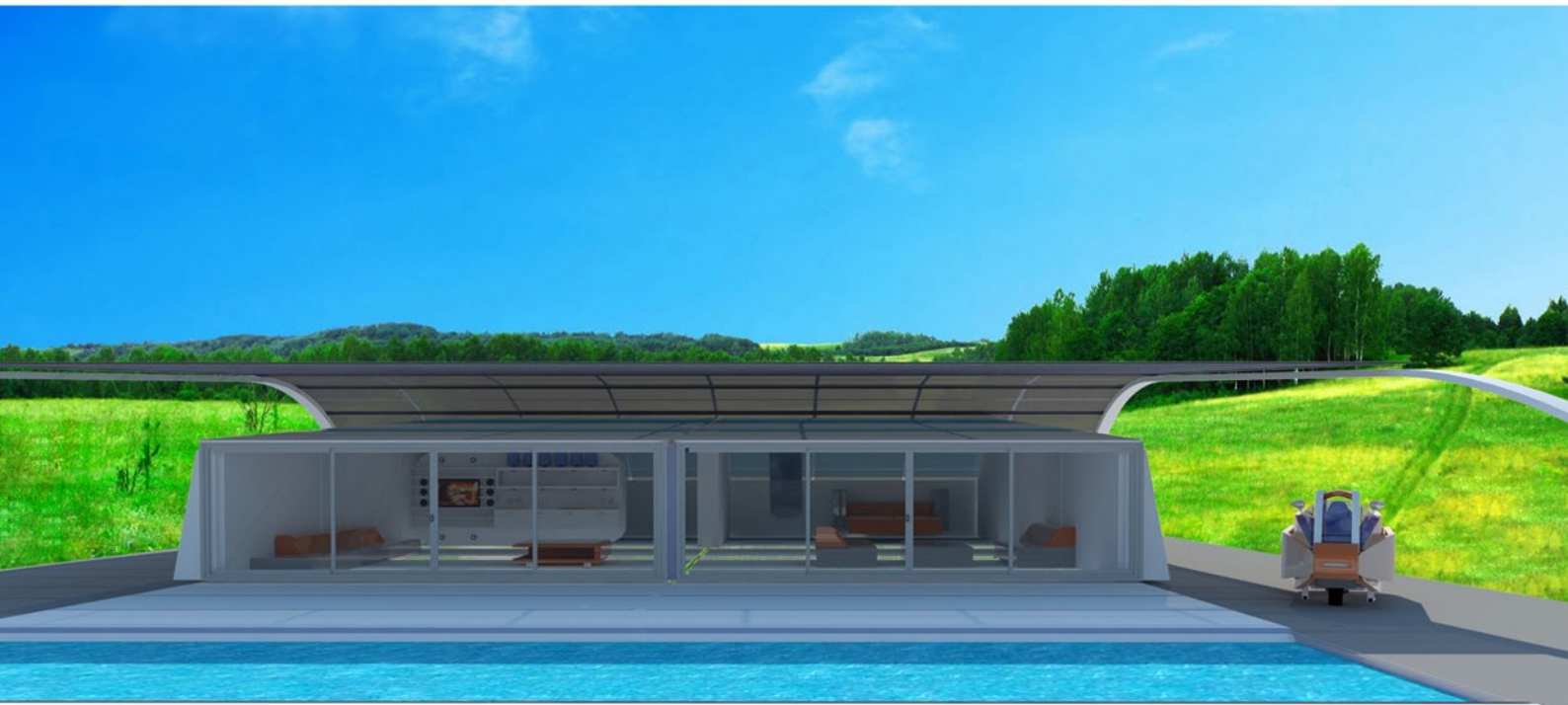
With vehicle freight elevator, 1st floor is associated with the 2nd (1000m2)

Without, 1st floor is used as parking for all floors.

Idea "zero building expenses" the tenant of the upper floor (rooftop) pays rent which covers all charges!



ON THE ROOF OF A BUILDING, RIO...



COUNTRYSIDE, SENS...



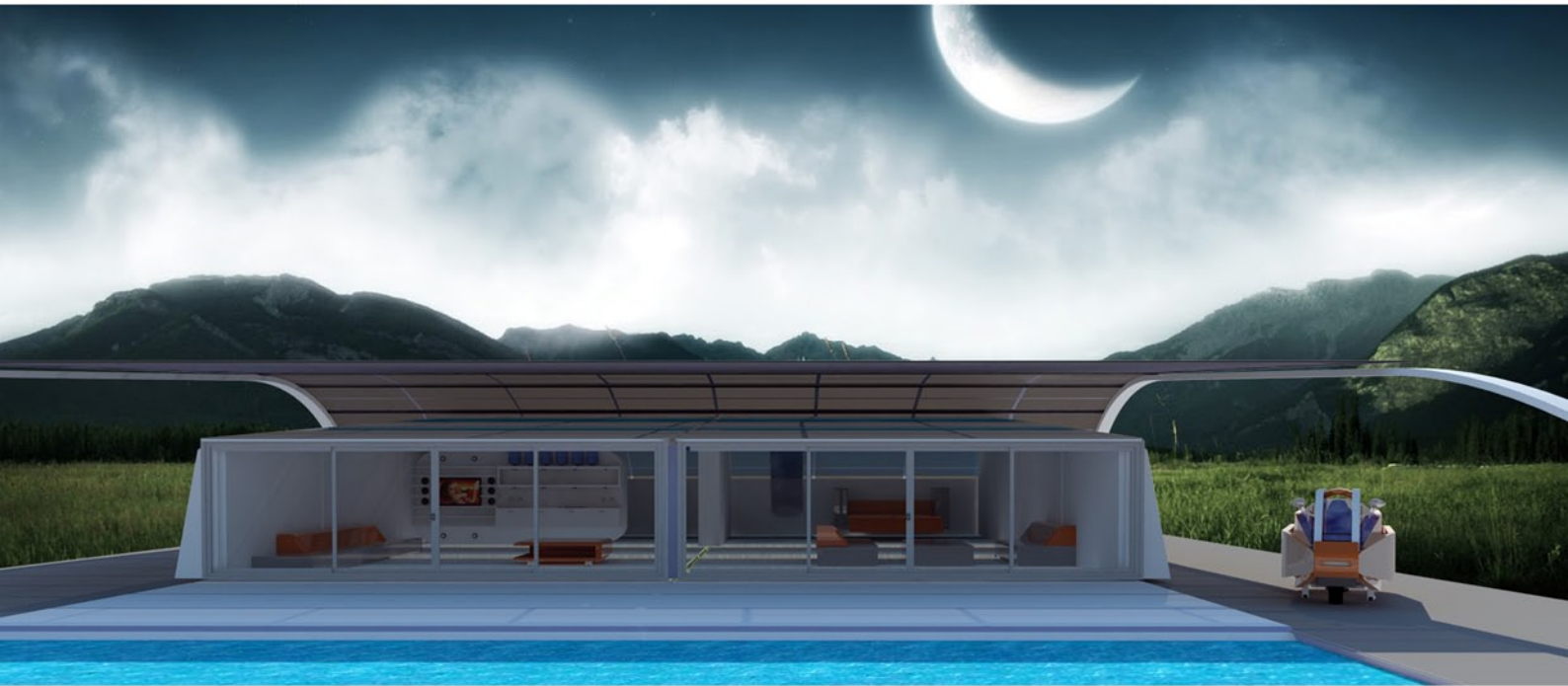
IN THE FOREST IN STANDALONE MODE



BY THE POOL..



MULTILOFT COMPLEX AROUND A POOL, BARCELONA...



PACKAGEHITECH : LOFT & SCOOT, OURIKA, FULL MOON...



PACKAGEHITECH : LOFT & SCOOT, NEUCHATEL...



SPLENDID. ALONG THE RIVER, QUAI DE SEINE...



PACKAGEHITECH : LOFT & SCOOT, NEUCHÂTEL...

ORDER FORM



by mail, e-mail, fax

return this order form with the copy
of your transfer to :
Lofthitech.com limited CR No. 1766774 Office 2611 Office Tower
Langham 8, Argyle Street Kowloon Hong Kong
Tel: +852 8170 3250 contact@lofthitech.com
Account name: LOFTHITECH.COM
Beneficiary address: Office 2611 Langham Place Office Tower
8 Argyle Street Kowloon Hong Kong - Bank name: HSBC Bank
address: 82 - 84 Nathan Road, Tsim Sha Tsui Kowloon Hong Kong
Account number: 817-586241-838 SWIFT/BIC code: HSBCHKHHHKH

by phone

EUROPE : +33 1 43 80 68 37
AMÉRIQUES : +1 302 482 8214
ASIE & OCÉANIE : +852 81 70 32 50
AFRIQUE : +212 6 79 32 05 04

name : _____ forname : _____
address : _____
zip code : _____ city : _____
country : _____ Email : _____
phone : _____ Fax : _____

item	number	price

port and packing costs according quote _____

Total all charges included

done at _____ date _____ Signature : _____

Payment :
any order, 100% with order, bank transfer or other means on the account of the company lofthitech.com ltd
Hong Kong. (see terms). Unique order number provided by lofthitech.com to write in the wording of the transfer.

TERMS

GENERAL CONDITIONS OF SALE

ARTICLE 1 - PURPOSE

These Terms and Conditions are intended to govern the contractual relationship between the company and its customers LOFTHITECH.COM in connection with the sale of goods offered for sale by LOFTHITECH.COM. The term "sale" means any supply of modular construction, whatever the exact qualification of the contract.

ARTICLE 2 - SCOPE

Except express agreement between the parties, all sales are automatically subjected (and without reserve) to the present general conditions which prevail waiver of any general conditions of purchase. Unless a framework written contract between the customer and LOFTHITECH.COM, these Terms and any previously granted or traded are valid only for a particular sale. Their possible repetition of a sale to another sale has no effect in case of creating a vested benefit the customer or any framework contract between LOFTHITECH.COM and client. LOFTHITECH.COM may at any time modify these terms without notice. Any changes can not affect orders already accepted or executed.

ARTICLE 3 - TRAINING / MODIFICATION OF CONTRACT

Any sale is considered as accepted by LOFTHITECH.COM if a writing confirmation or executed is given. This command will be accepted special conditions. Any order change requested by the customer cannot be considered unless it is received in writing via email to LOFTHITECH.COM, and before any commitment of expenditure on the initial order. Any change order will be notified by a written acceptance email LOFTHITECH.COM. Each product is described on the site LOFTHITECH.COM. The photographs in the catalog or 3D images are as accurate as possible but cannot ensure a perfect similarity with the product sold, particularly with regard to color or options. Consequently, 3d images, photographs and other images of synthesis, presented support the sale cannot have any contractual value and could afford to incur liability LOFTHITECH.COM.

ARTICLE 4 - PRICE

The period of validity of offers and prices is determined by discounting the rate. The prices of goods sold are those in effect on the day the order is placed. They are set ex works, in euros and exclusive of tax. Consequently, they will be raised in the VAT rate and applicable shipping costs on the day of the order. Lofthitech.com the company reserves the right to change prices at any time. The customer will be in charge of delivery costs, unless it decide to remove the products directly at the workshops of LOFTHITECH.COM. Concerning the cost relating to product installation, the customer may choose to make himself the assembly, or opt for mounting products with LOFTHITECH.COM itself, which will be subject to additional charges (added separately).

ARTICLE 5 - PERIOD - PAYMENT

The order of payment could be done by different possibilities:

- By secured payment on the site www.LOFTHITECH.com;
- Or, by a PayPal account;
- Or, by credit card;
- Either, by bank transfer.

When recording of the order, and when the products will be available within 60 days from the order, the buyer must pay a deposit of 60 % of the amount TTC of the invoice, the balance may be paid on the date defined for the delivery of goods. If products are available within 40 days francs (fast manufacturing), the buyer will have to pay 100 % of the total VAT of the invoice, and during the recording of the order. Unless other indication, any payment would be based on the oldest invoice. No discount will be granted for early payment.

ARTICLE 6 - LATE PAYMENT

In case of total or partial late payment when it's due, a late penalty equal to three times the rate of the French legal interest will be due to LOFTHITECH.COM, without prejudice to any claim for compensation for damage related audit delay. The rate of legal interest is that the one noticed the day of delivery of goods. This penalty is calculated on the amount of all taxes included the outstanding sum, and runs from the due date of the invoice without any prior notice being required.

ARTICLE 7 - CLAUSE OF PROPERTY RESERVE

LOFTHITECH.COM keeps the ownership of the goods sold until full payment, in principal, interest and accessories, even when granting payment period.

Any contrary clause, notably inserted in the general conditions of purchase, shall be disregarded.

As such, if the client is subject to a recovery or liquidation, LOFTHITECH.COM reserves the right to claim, as part of the bankruptcy proceedings, the goods sold and remained unpaid. From the delivery, customers are made custodian and guardian of the goods. In the case of non-payment and unless LOFTHITECH.COM prefers to seek full execution of the sale, LOFTHITECH.COM reserves the right to be considered the sale resolved fault after formal notice remains unsuccessful 15 days and claim the goods delivered, the return costs remaining the responsibility of the purchaser and payments being acquired LOFTHITECH.COM as a penalty clause.

ARTICLE 8 - DELIVERY - INSTALLATION - COMPLIANCE

The customer has the option to withdraw its products directly at the LOFTHITECH.COM shop, or can opt for delivery which will be performed ex works

The delivery time indicated at the time of the order is only given for guidance and is not guaranteed. Consequently, any delay in the provision of products will not lead to the benefit of the client:

- The allocation of damages;
- The allocation of penalties;
- The cancellation of the order.

Then, it is possible for the Client to obtain a full refund of his order, only if the manufacture of products exceeded 90 days from placing the order. It is the responsibility of the customer to check the delivered goods upon delivery. In case of missing goods, damaged or apparent non-compliance, the customer must make all necessary reservations on the delivery upon receipt of the goods. These reservations must be further confirmed in writing within five business days after delivery by registered mail with return receipt. Otherwise, the client is deemed to have accepted the goods without reservations. The customer must provide any justification as to the reality of the defects, LOFTHITECH.COM reserving the right to, directly or indirectly, to any findings and audit. The return of non-conforming goods is subject to the prior acceptance of LOFTHITECH.COM. Otherwise, the client is deemed to have accepted the goods without reservations. In case of non-payment of a full bill at the end of the delay, after formal notice remained without effect within 48 hours, LOFTHITECH.COM reserves the right to suspend all deliveries current and / or future. In the event that a customer makes an order LOFTHITECH.COM without having made the payment of the previous order, LOFTHITECH.COM may refuse to honor the order and deliver the goods concerned, without the customer being entitled to any compensation for any reason whatsoever.

ARTICLE 9 - SPONSORSHIP

When a historical customer LOFTHITECH.COM sponsors a new customer, he can apply for a gift under his act of sponsorship, and as follows :

- Either the sponsor will receive a shopping voucher worth 10% of the total amount excluding tax and transportation costs or installation of the invoice paid by his goddaughter with LOFTHITECH.COM. This voucher will be valid on all brand products marketed by Apple via RSI Paris French retailer (all taxes included) - Or, the sponsor will receive a voucher for 10% of the total value excluding taxes and transportation costs or installation of the invoice paid by his goddaughter with LOFTHITECH.COM. This voucher is only valid with the LOFTHITECH.COM society. To satisfy the sponsorship requirements, the sponsor will have to send email to LOFTHITECH.COM, at: contact@lofthitech.com, ensuring the wish to sponsor a third party, and all contact details of the latter. The shopping voucher will be delivered to the sponsor once the sale has become effective and therefore regulated by the goddaughter to LOFTHITECH.COM society.

ARTICLE 10- TRANSFER OF RISK

Except an agreed otherwise between the parties particular, the transfer of customer theft, loss, damage or destruction occurs upon delivery or if delivery to the carrier upon delivery of goods to the first carrier.

ARTICLE 11 - FORCE MAJEURE

The responsibility of LOFTHITECH.COM cannot be implemented if the non-performance or delay in performing any of its obligations described in these terms and conditions stems from a case of "Force Majeure". Force majeure means any external cause, predictable or not, irresistible kind or the effects of which would significantly alter the economic balance of the sale for LOFTHITECH.COM. Strike events, lockouts, fire, flood, riot, war, fuel shortages, energy, transport, materials, products necessary for LOFTHITECH.COM manufacturing, etc., are required for a case of strength major, even if they are only partial and whatever the cause.

ARTICLE 12 - INDUSTRIAL AND INTELLECTUAL PROPERTY

The names " LOFTHITECH.COM " and all figurative or not brands and more generally all other marks, illustrations, images and logos appearing on the goods, accessories and packaging, whether registered or not, are and remain the exclusive property of LOFTHITECH.COM. Total or partial reproduction, modification or use of these marks, illustrations, images and logos for any reason and on any medium whatsoever, without the express prior consent of LOFTHITECH.COM is strictly prohibited. It is the same to any combination or conjunction with any other mark, symbol, and logo and more generally any distinctive sign intended to form a composite logo. It is the same for any copyright, drawings, models and patents are the property of LOFTHITECH.COM. All customer delivered technical papers remain the exclusive property LOFTHITECH.COM only owner of the intellectual property rights on these documents, and must be returned upon request. The customer agrees not to make any use of these documents, which may affect industrial or intellectual property rights LOFTHITECH.COM and not disclose to any third party without the express LOFTHITECH.COM agreement.

ARTICLE 13 - GUARANTEES

By apply the provisions of the United Nations Convention of 11 April 1980; the Customer has the right to a contractual guarantee. The customer also has the option to purchase additional product warranty, and either by subscribing LOFTHITECH warranty of one (1) year or is that of a ten (10) additional years. The cost of the latter is fixed in the special conditions of sale.

ARTICLE 14 - LIMITATION OF LIABILITY

Customer may purchase additional product warranty, and endorsing the LOFTHITECH guarantee:

- Or, a period of one (1) year, the cost is 10 % of the total sum out of the ordered products ;
- Or, that of ten (10) additional years at a cost equal to 100 % of the total tax amount of products ordered.

From information LOFTHITECH.COM, a technician of LOFTHITECH / COM will intervene on the site, to estimate the necessary repairs, and possibly carry out the exchange of standard parts. Technician travel costs have to be taken in charge by the Customer when it opts for the commercial guarantee with a duration of one year. It was not until receipt of full payment the technician will intervene.

ARTICLE 15 - INFORMATICS LAW AND FREEDOMS

In the case of a relationship of purchase LOFTHITECH.com is brought to collect personal character data regarding the Customer and treat including computer memory in accordance with the law "and Freedoms" of January 6, 1978. This data will not be disclosed to third parties. They will be used as part of the purchase relation LOFTHITECH.com society

The Customer may request, obtain a copy and if necessary rectify the data concerning him. It may, for legitimate reasons, oppose that these data are subject to treatment.

To exercise the right of objection, the Customer can send an email to the LOFTHITECH.com Company at the following email address: contact@lofthitech.com.

ARTICLE 16 - CONTRACT LANGUAGE

By express agreement between the Parties, these are governed by and subject to French law. They are written in French. In case they are translated into one or more languages,

only the French text would prevail in case of dispute.

ARTICLE 16 - AWARD OF JURISDICTION

The Hongkaise jurisdiction is competent to hear any dispute concerning the application of these terms of sale and their interpretation and execution of their sales contracts concluded by lofthitech.com, or subject to the prize payment, even if several debtors, call or warranty refers. However lofthitech.com reserves the right to assign the customer before the commercial court in the spring which the client has his residence.

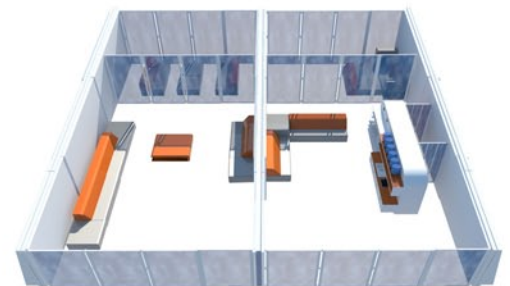
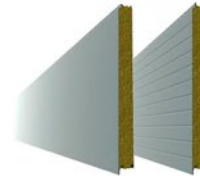
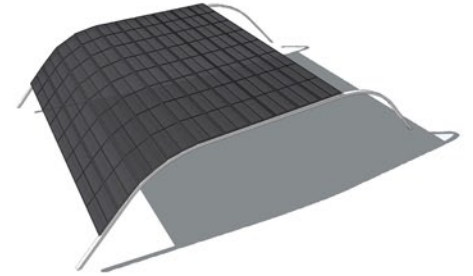
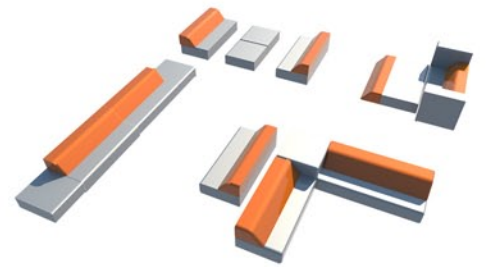
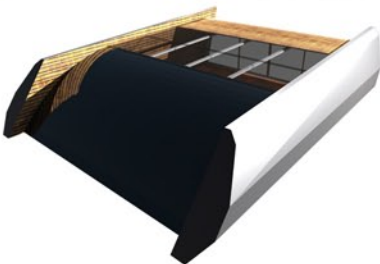
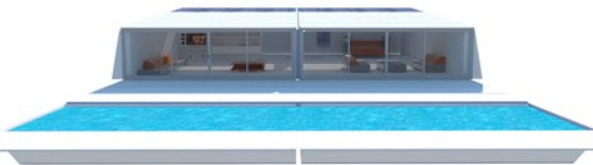
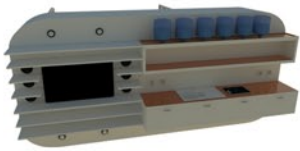
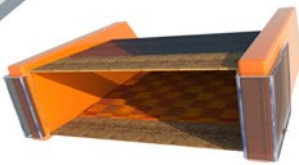
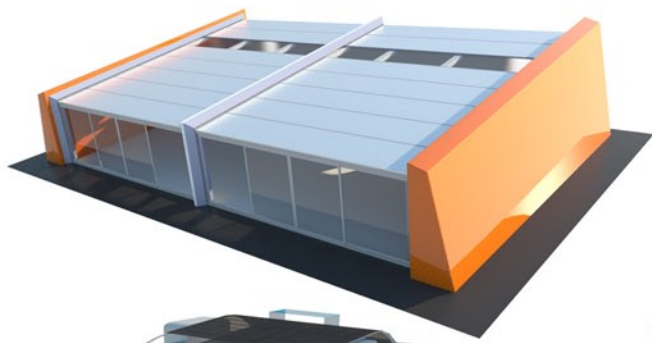
ARTICLE 17 - APPLICABLE LAW

Any dispute concerning the interpretation and enforcement of these terms and conditions is subject to the United Nations Convention on the International Sale of Goods of April 11, 1980

ARTICLE 18. ENTRY INTO FORCE

These general conditions of sales are effective upon acceptance by Customer.

Contact information, signature and stamp of the customer or partner with the words "good for acceptance of the lofthitech.com terms"



Lofthitech.com Ltd Hong Kong

Europe : +33 1 43 80 68 37 Amériques : +1 302 482 8214

Asie Océanie : +852 81 70 32 50 Afrique : +212 6 79 32 05 04

Email : contact@lofthitech.com Skype : lofthitech.com

Lofthitech.com limited CR No. 1766774 Office 2611 Office Tower Langham
8, Argyle Street Kowloon Hong Kong Tel: +852 8170 3250 contact@lofthitech.com
Account name: LOFTHITECH.COM

Beneficiary address: Office 2611 Langham Place Office Tower 8 Argyle Street Kowloon Hong Kong
Bank name: HSBC Bank address: 82 - 84 Nathan Road, Tsim Sha Tsui Kowloon Hong Kong
Account number: 817-586241-838 SWIFT/BIC code: HSBCHKHCHKH